

# TYDOM application



# CONTENTS

CONTENTS	2
Using the TYDOM application	3
Home screen memo	4
Control screen memo	5
Add a home	6
Add a device	7
Personalise how your devices are displayed	8
Create a scenario	9
Add a photo	10
Add a room	11
Create groups	12
Control your devices	13
Programme atmospheres for your everyday moments	14
Additional information	16

# Using the TYDOM application

The Tydom application allows you to control Delta Dore devices in complete security from your home or remotely.

## Preliminary steps

Download the Tydom application:

On Apple store for iPhone, iPad or iPod touch devices from IOS 9.0 upward.

On Play store for Android devices from Android 4.1 upward

- On your device, login with your email ID and password.
- Ensure that you have one or more compatible devices with Tydom. Check that the wording 'Tydom ready' is on the product's packaging, or if the device is in the 'Add a device' catalogue list within the Tydom application.
- To configure your home, authorise your Tydom application to use your GPS position and your photo device.

# Home screen memo

## MENU

Tap this icon to access all the application's settings: Add devices, personalise devices, configure your homes, create or modify your scenarios, the photos of your home interior, your rooms, your groups...

## HOME

The name of the home to which you are connected is displayed here. Tap this zone to change home.

## DEVICES

Tap one of your devices to control it. Remain pressed to move and reorganise your devices on your home screen.



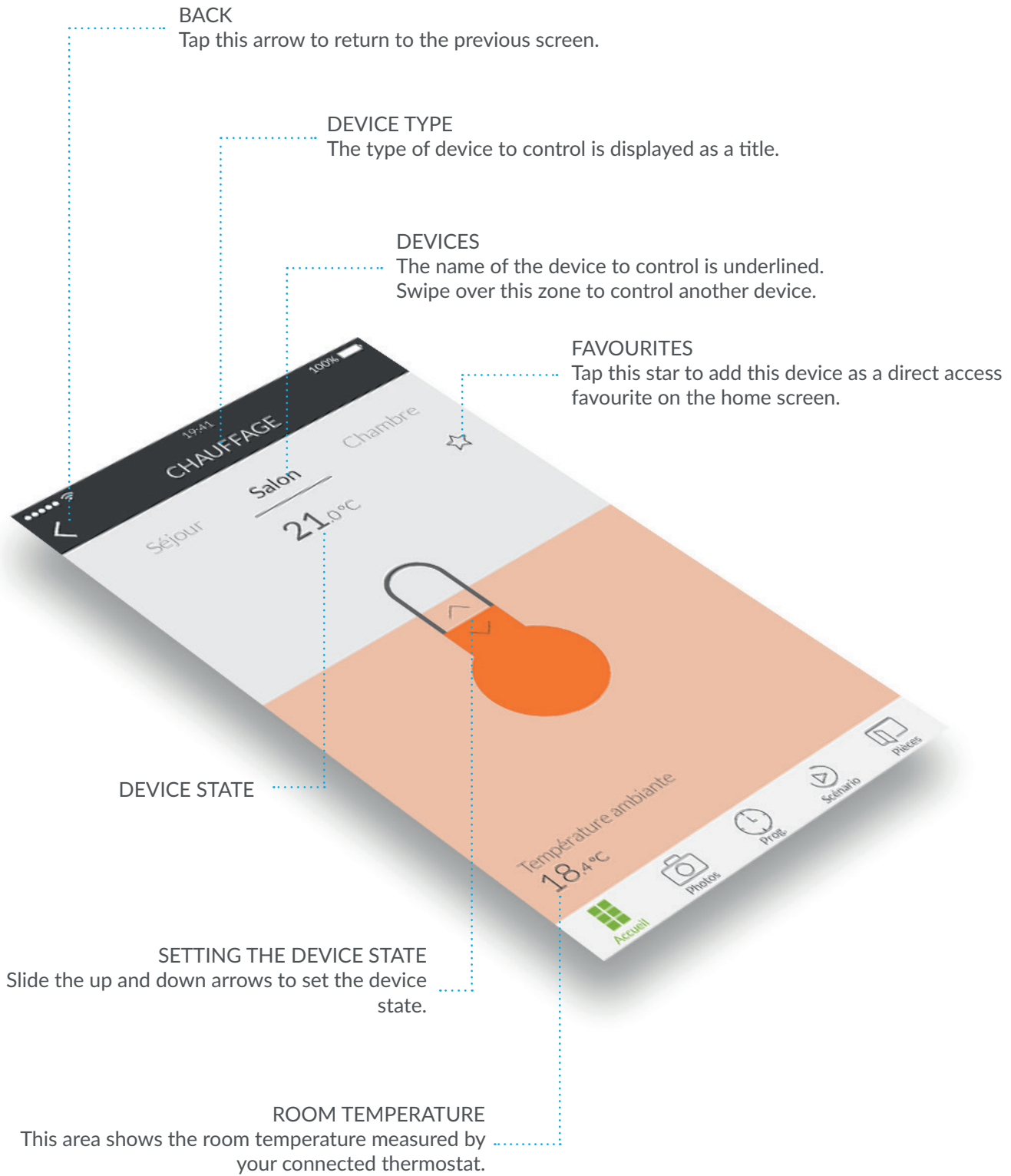
## NAVIGATION

- Home** allows you to view all the devices in your home.
- Photos** allows you to control your devices from photos of your home.
- Prog.** the weekly schedule that is used to automate your home.
- Scenarios** enable you to control a group of various devices in one action.
- Rooms** groups together the different devices of the same room.

## PAGE POINTER

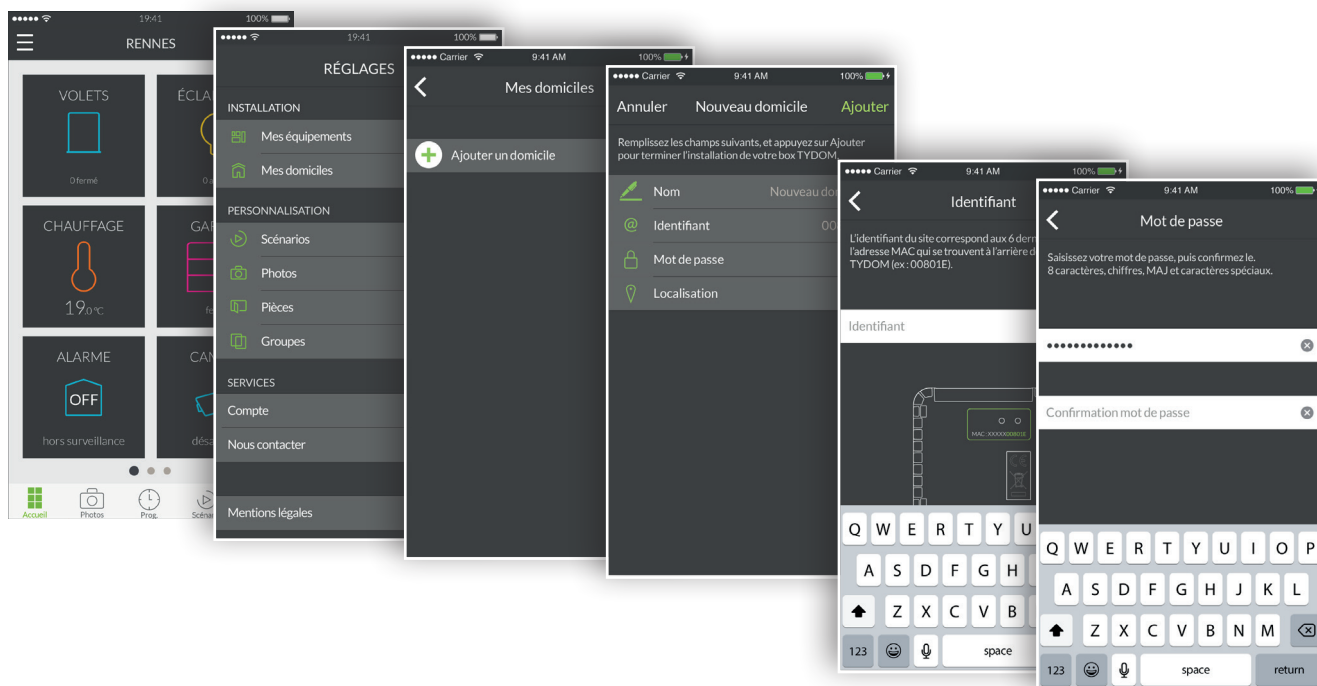
The points display the page number as well as the position of the current page viewed. Swipe your finger over the screen to view other pages.


# Control screen memo



# Add a home

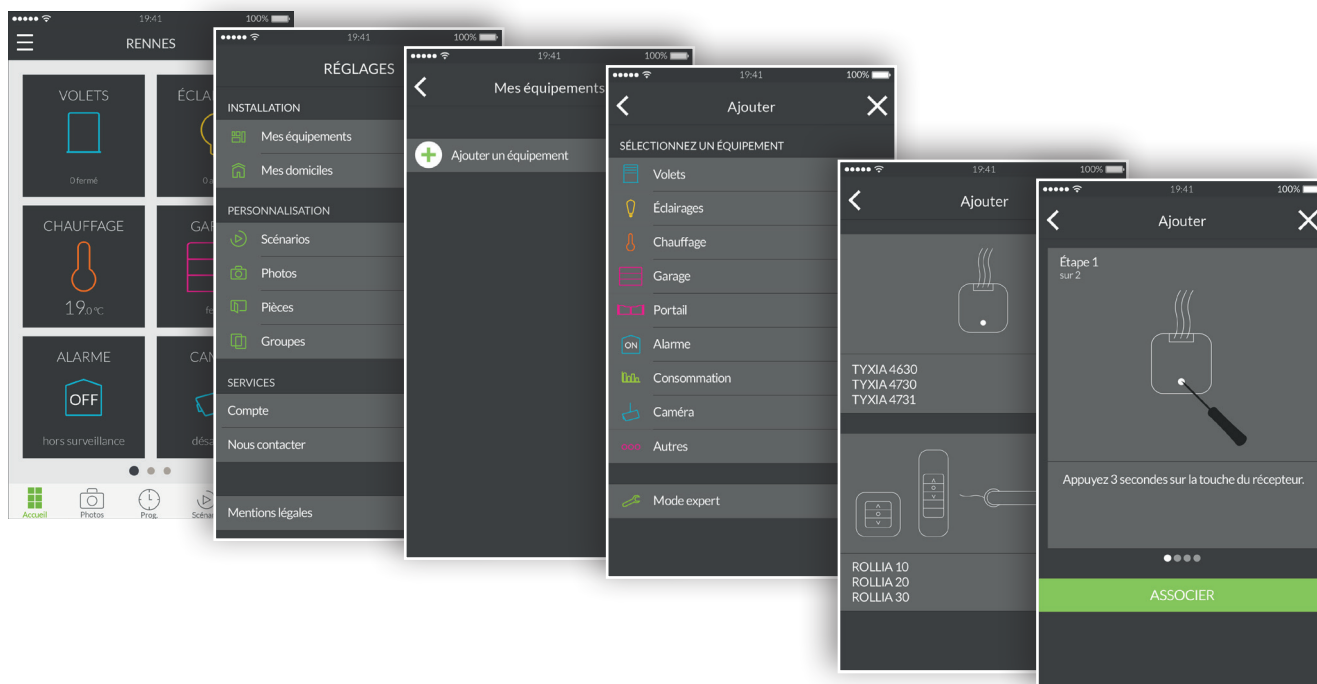
Once your Tydom gateway is installed, you must login to your gateway when you first start up the application.




1. Open the Tydom application, then tap the menu  icon at the top left of the screen to access the settings.
2. Tap the 'My homes' line.
3. Tap 'Add a home'.
4. You can name your home. For example, 'Main home', or the name of the city.
5. Enter the identifier if it is not pre-filled. The identifier corresponds to the 6 last characters of the MAC address written on the back of your TYDOM gateway. For example, '00801E'.
6. Define a password so as to protect access to your devices by tapping on 'Password'.
7. Once the information is entered, tap 'Add'. Your application is connected to the Tydom gateway.
8. To modify the settings entered during the creation of the home, tap the icon on the top left to access the settings, tap 'My homes'. The name of your previously created home is displayed. By tapping on its name, you access a screen that can change the name, change the password, as well as access the 'Replace Tydom' and delete functions.

# Add a device

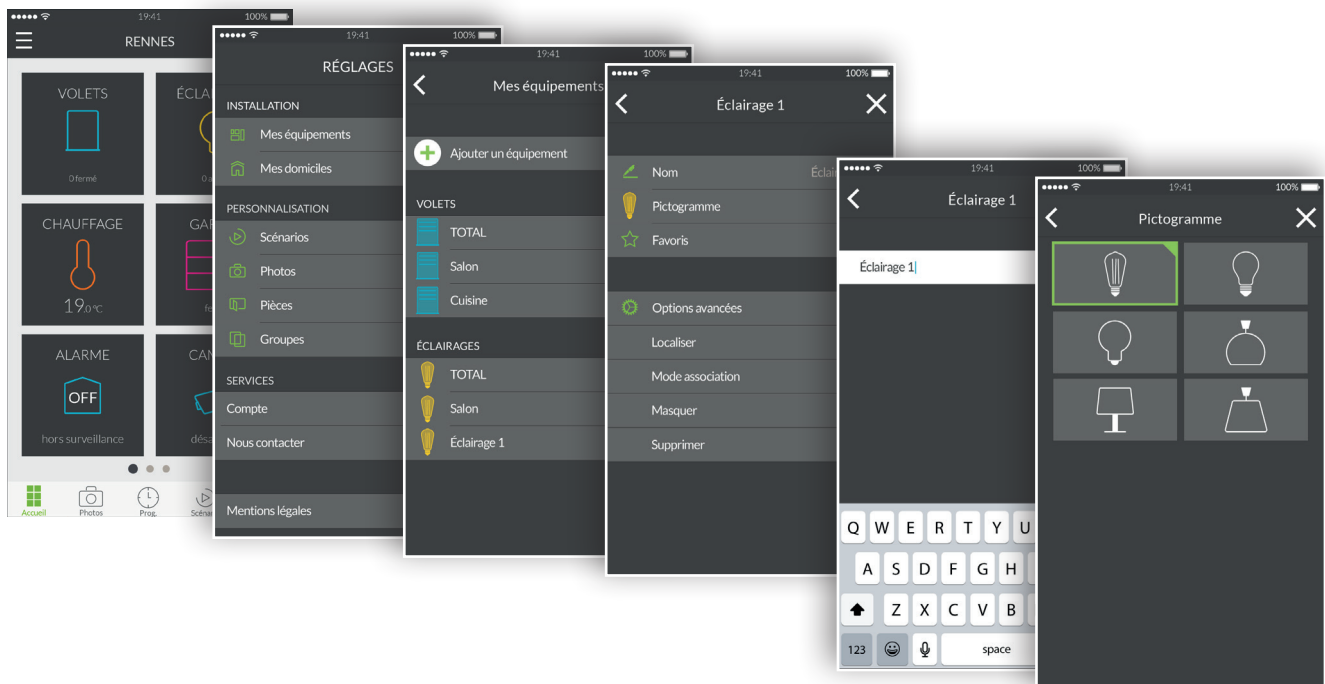
To begin with, create your connected home, add roller shutters, lights, thermostats, an alarm and other Tydom-compatible devices. Before adding a device, ensure that it is connected.




1. Open the Tydom application, then tap the menu  icon at the top left of the screen to access the settings.
2. Tap the 'My devices' line.
3. Tap 'Add a device'.
4. The list of devices is displayed.
5. Select a device from the list.
6. For example, if you want to add a roller shutter, tap the 'Roller shutters' line. Then select the device to connect with Tydom from the list displayed.
7. Follow the tutorial step by step up to the final one, then tap 'ASSOCIATE'.
8. When your device is associated, it appears in the 'My devices' list, and you can then personalise it.

# Personalise how your devices are displayed

You can change the details regarding the device, such as its name, pictogram, or add it as a favourite to the home screen.

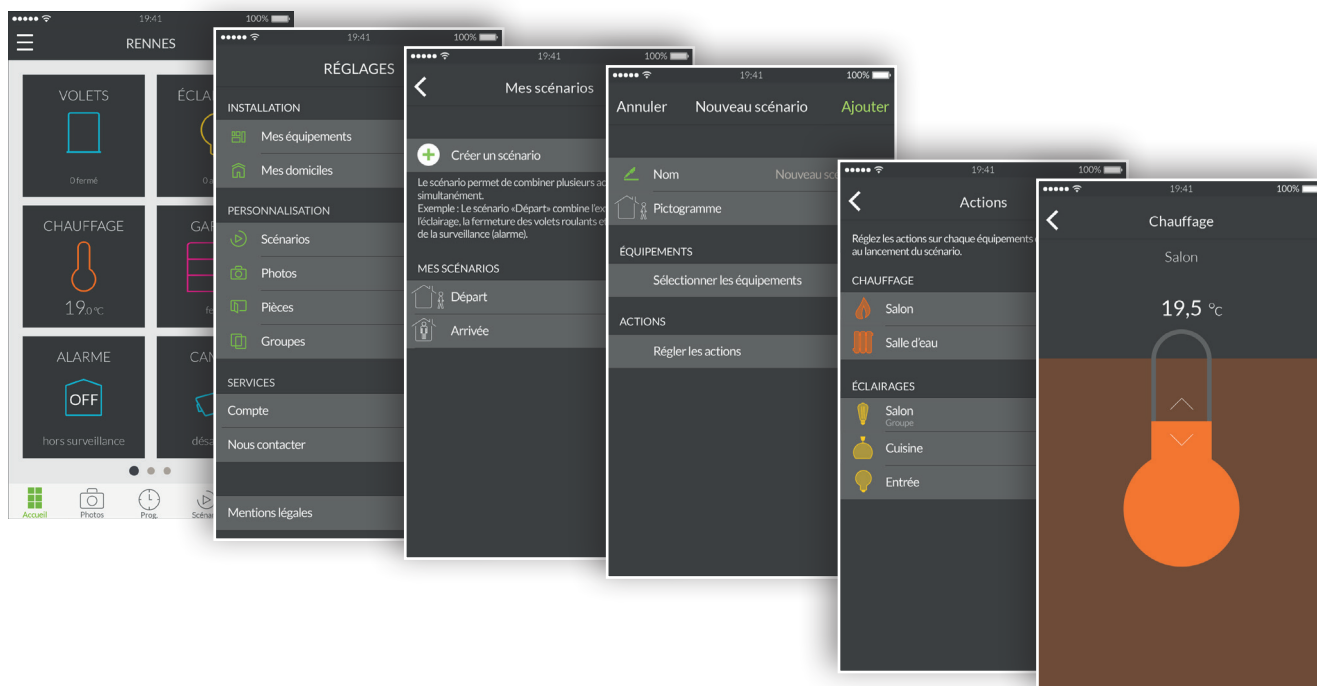



1. Open the Tydom application, then tap the menu  icon at the top left of the screen to access the settings.
2. Tap the 'My devices' line.
3. Select the device you want.
4. You can change the name of your device.
5. Select a pictogram to differentiate it from another similar device.
6. Favourites is used for rapid access to control your device from the home page.
7. The advanced options hide the functions locate, association mode, hide and delete.
8. The 'Hide' function is used not to show a device from the list of the control section. The product then becomes only a repeater and can no longer be controlled.



# Create a scenario

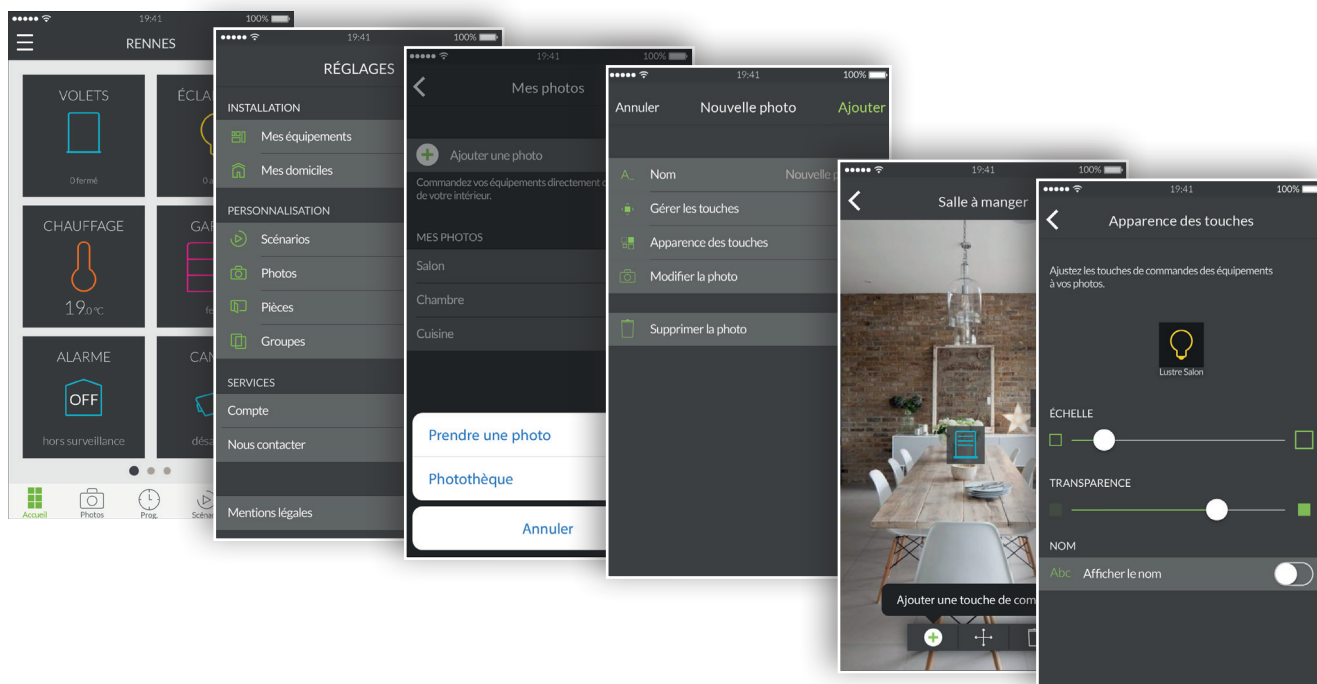
A scenario allows you to control several devices at the same time. For example, you can create a scenario called 'Leaving home', that switches off all the lights, drops the temperature of the heating devices and puts the alarm in surveillance mode.




1. Open the Tydom application, then tap the menu  icon at the top left of the screen to access the settings.
2. Tap the 'Scenarios' line.
3. Tap the 'Create a scenario' line.
4. The 'New scenario' screen is used to name the scenario, select the pictogram, select the devices to use and set the actions for each device.
5. Tap 'Add' to save your scenario.

# Add a photo

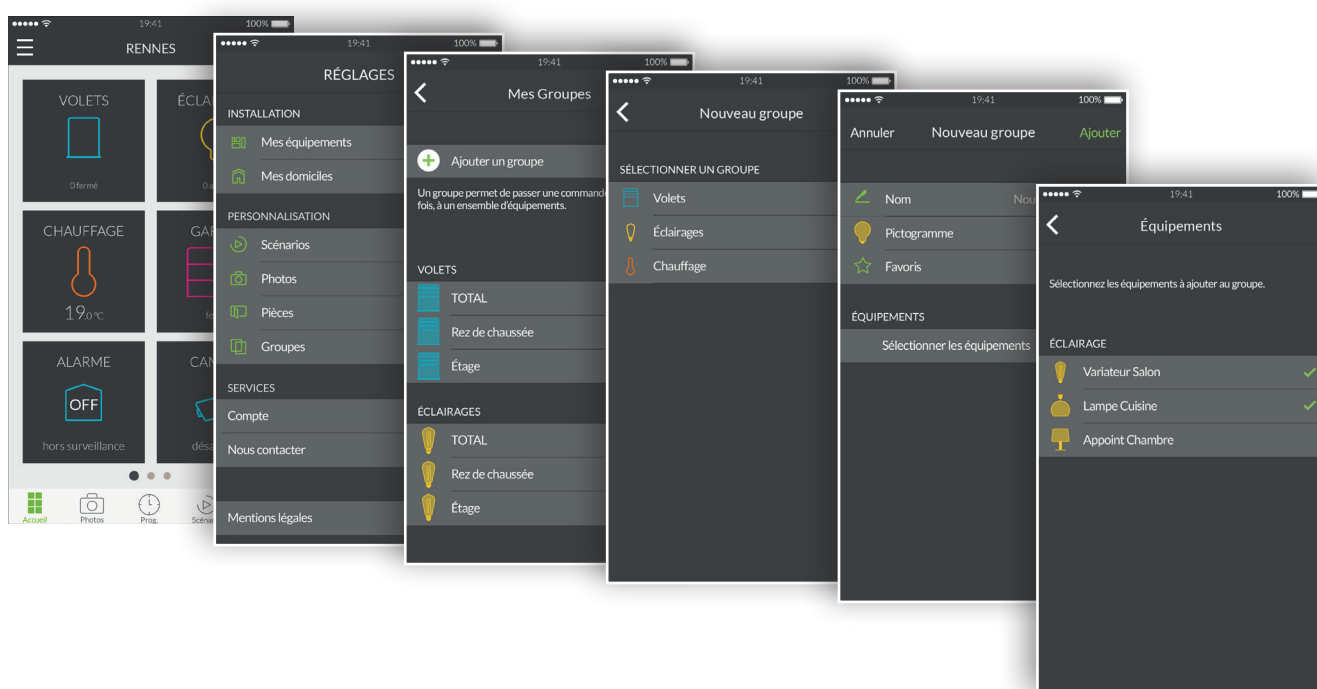
You can control Delta Dore devices from photos of your home. This is an immersive mode for an innovative visual method of control.




1. Open the Tydom application, and tap the menu  icon at the top left of the screen to access the settings.
2. Tap the 'Photos' line.
3. Tap 'Add a photo'.
4. Either you take a photo of the room or select a photo from a photo library already taken.
5. Once the photo is taken or selected, you access the parameters of the photo.
6. Personalise the photo name.
7. 'Manage the buttons' is used to add, move and delete the control buttons on the photo.
8. 'Button appearance' changes the size and transparency of the buttons that are positioned on the photo.
9. Tap 'Add' to save your photo.

# Create groups

You can control several Delta Dore devices from a group. By default, 'all' group is created for each type of connected devices. An all lighting group is used to switch off all the lamps in your home. You can create personalised device groups here. For example, with just one command, you can just close all the ground floor shutters of the home.

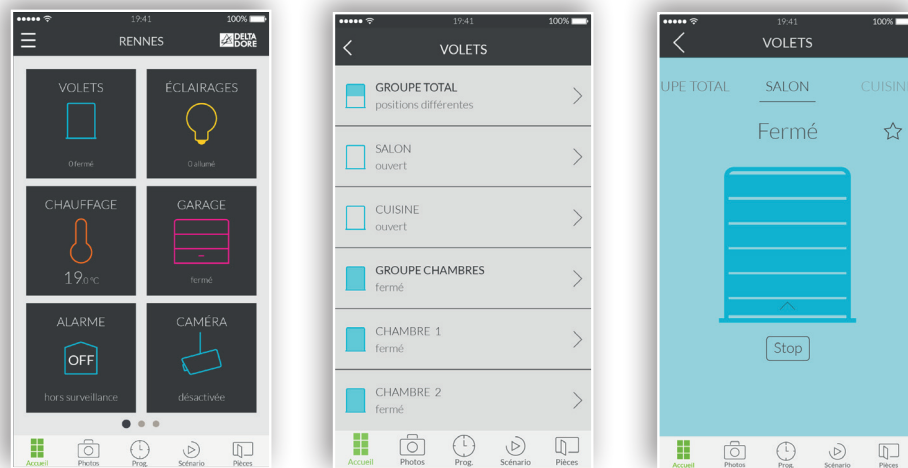


1. Open the Tydom application, then tap the menu  icon at the top left of the screen to access the settings.
2. Tap the 'Groups' line.
3. Tap the line 'Add a group'.
4. Select the group type you want to create from Roller shutters, Lighting or Heating.
5. The 'New group' screen is used to name the scenario, select the pictogram, select the devices to include in this group.
6. Tap 'Add' to save your group.

# Control your devices

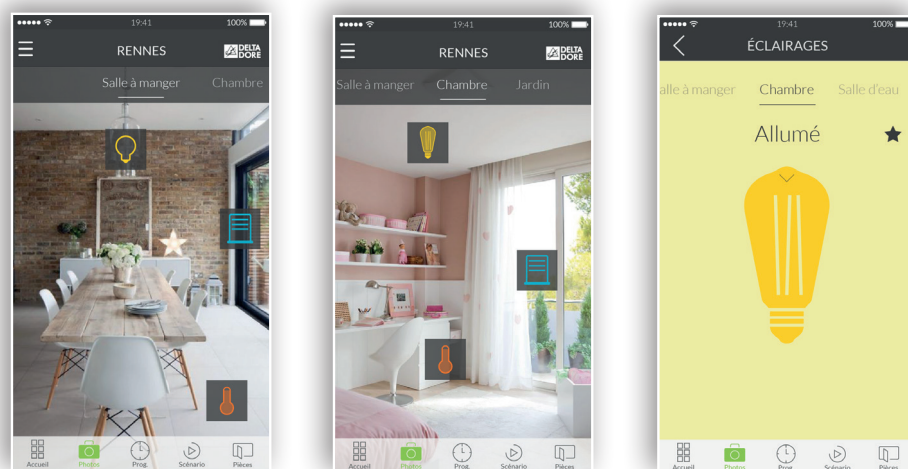
You can control your devices either within the home, from your photos or from your rooms.

## Home screen control:



1. To control your devices from the home screen, tap a device family, for example 'SHUTTERS'.
2. Select the device you want from the list shown.
3. Now, in this control screen, swipe your finger upward on the pictogram to switch on the device and downward to switch it off.
4. Tap the star to add this device to favourites on the home screen. When selected as a favourite, your device can be accessed from the home screen.

## Control by photos:

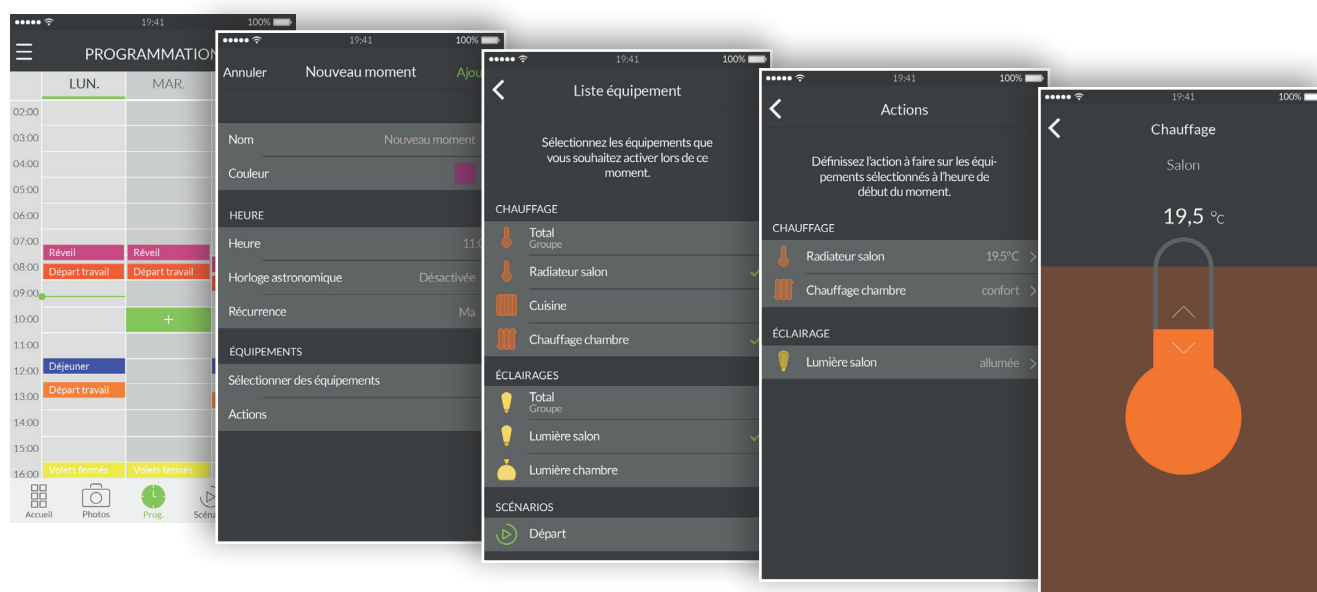


1. Tap the photo icon to control the devices from your photos.
2. The photos previously created appear in the settings menu. Click on one of the widgets that you have positioned so as to control the relevant device.

# Programme atmospheres for your everyday moments

An everyday moment groups together several devices in your home. Specify how you want them to operate, programme the day and time for triggering the moment you have just imagined.

When creating your everyday moments, you choose the comfort level that suits you. For example, at sunrise, programme your roller shutters to open at 7am and increase the temperature of the heating.



1. Tap the 'Prog' icon of the browsing zone at the bottom of the screen to access the programming of your devices, a calendar is displayed with a 3-day range on smartphone, where you can zoom in on and move this calendar. The display shows a 7-day period on tablets.
2. Tap twice on a zone for a day and time at which you want to create a moment or tap the '+' icon to display the creation screen.
3. Customise the name and colour to make it stand out in the schedule.
4. Select a set start time.
5. You can also activate a trigger in line with sunrise and sunset times. Your programme will therefore be run at different times throughout the year, according to the season.
6. This allows you, for instance, to open your roller shutters as soon as daybreak arrives or switch on the outdoor lighting when night falls.
7. You do this by tapping on the 'Astronomical clock' and tapping on the switch to activate the astronomical function.
8. A graph showing a day is then displayed.
9. Tap and slide the green cursor horizontally to position it on the time required.
10. You can choose between a trigger according to the time of sunrise (left hand section) or a

trigger for sunset (right hand section). You can position the cursor at the exact time of the sunrise or sunset, or set a delay of more or less than two hours.

11. Set a recurrence for your moment over several days or every day.

12. Select the devices to control.

13. Set the actions of the devices.

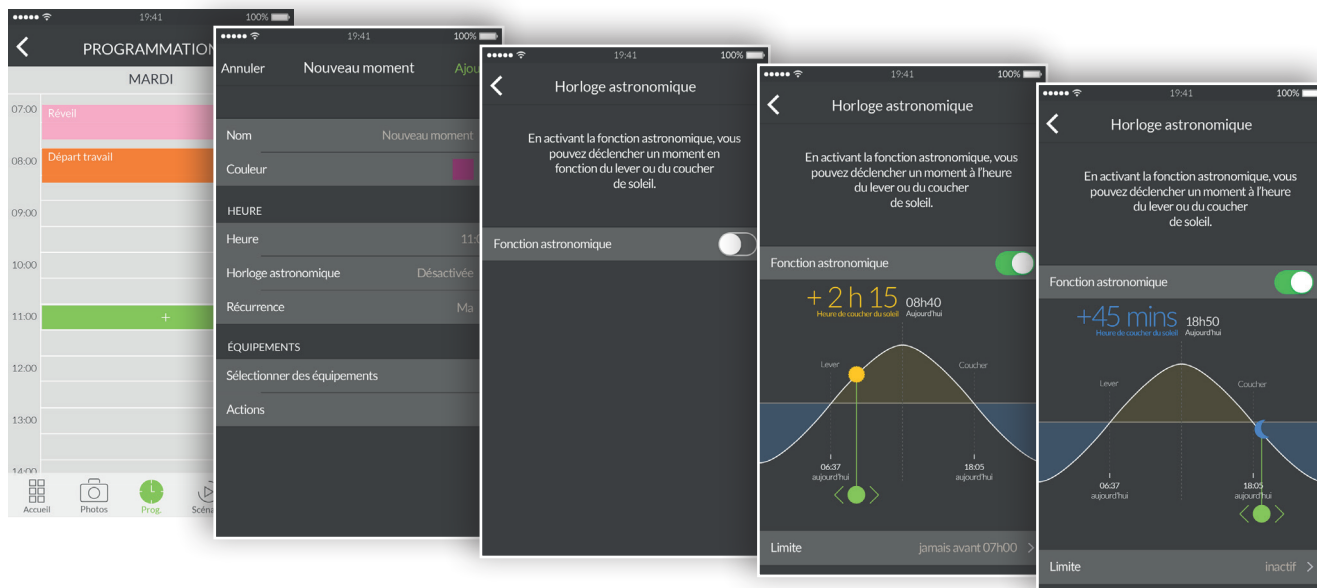
14. To change a moment already created, tap the moment to access the detailed view. If a recurrence is activated, all the recurrent moments will be modified. When finished, press on the return arrow to return to the programming view.

15. To delete a moment, tap the moment required then tap the 'Delete' line. If a recurrence is activated, all the recurrent moments will be deleted.

16. You can suspend a moment by tapping the corresponding switch. A suspended moment will no longer be run until you decide to reactivate it by tapping the switch again.

17. You can also fully suspend the programming by tapping the pause button located at the top right. Select 'indefinitely' and the programming will no longer be run until you reactivate it manually.

18. For the programming to run automatically, tap 'up to' then select a date and resume time.



# Additional information

- Find devices compatible with your Tydom on [www.deltadore.fr](http://www.deltadore.fr).