

TYDOM 2.0

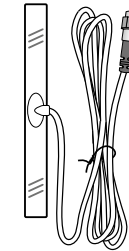


EN IP/GSM home automation transmitter
Installation guide

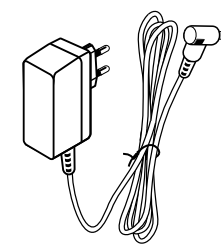




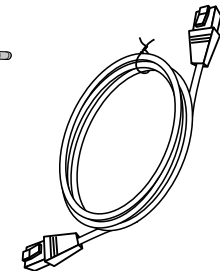
TYDOM 2.0



GSM antenna

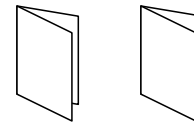


Mains adaptor



Ethernet cable

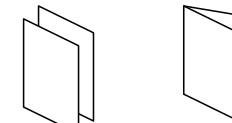
Guides



Installation

User

Documents



SIM card ready to use

Important Product Information



Lithium battery LSH20 3.6 V



CAUTION : Contains parts and assemblies susceptible to damage by Electrostatic Discharge (ESD).

Observe precautions for handling electrostatic discharge sensitive devices.

Any accumulated charge on the body of the human operator should be discharged first before a service engineer (e.g. Battery replacement). The discharge can be accomplished by putting a hand on a grounded surface or, ideally, by wearing a grounded antistatic wrist-strap.

The connection quality of your product may be affected due to changes on the IP architecture on which it operates. These changes may involve (the list is not exhaustive) a change in hardware, software update or configuration operations, work on your operator's equipment or any other multimedia devices such as tablets, smartphones, etc. Android™ and Google play are Google Inc trademarks. IOS™ is a Cisco Systems Inc trademark. WiFi is a Wireless Ethernet Compatibility Alliance trademark. Because of changes in standards and equipment, the characteristics given in the text and the illustrations in this document are not binding unless confirmed.

GSM:

Global System for Mobile communications. TYDOM 2.0 is connected to a wireless phone network.

GSM communications require a subscription to be taken out with an operator.

Advice before taking out your subscription:

- Enquire about your operator's network coverage for your installation.
- To prevent any interruption in the GSM network due to the expiry of a pay-as-you go or limited package SIM card, we do not recommend this type of card.

Maintenance mode:

The Maintenance mode is used for activation, maintenance and diagnostic operations. This mode can only be activated if the monitoring function is off. The alarm control unit is switched to Maintenance mode with a keypad (touch screen or simple), a remote control or a badge reader. (see system guide)

Tamper alarm:

The products are protected against being opened or dislodged.

If a burglar tries to open or dislodge one of the products, a message is sent to the alarm control unit which triggers its indoor siren, and the system's sirens (indoor or outdoor siren, TYDOM 2.0).

The tamper alarm is permanently activated even if the system is off.

It can be deactivated via a CLT 8000 TYXAL+ touch screen keypad.

Before opening a product, the system must be switched to Maintenance mode.

SMS

Short Message Service

Call cycle:

TYDOM 2.0 dials the first number in the contact list. If the contact does not pick up or if they do not acknowledge the call, TYDOM 2.0 then dials the 2nd number, then the 3rd... up to the 6th number.

If the call is not picked up, TYDOM 2.0 will repeat the cycle: 1st, 2nd, 3rd number, etc.

TYDOM 2.0 makes up to 16 consecutive calls or 4 cycles at the most.

IP

'Internet protocol'



Operation performed in Maintenance mode (see guide for CS 8000 TYXAL+ alarm control unit § Maintenance mode)



Use this device in line with the regulations in force and local restrictions. They can be applicable for example, in petrol stations, hospitals, etc.



This device can disrupt the operation of medical devices (hearing aids, pacemakers). Consult your doctor for more information.



This device can cause disturbances near television screens, radio sets and computers.



Do not use the device in a room with a risk of explosion (e.g. close to a source of gas, fuel or chemicals).

1. How does TYDOM 2.0 work?	6
1.1 Functions	6
1.2 Operation.....	7
2. Description	8
3. Installation	10
3.1 Location.....	10
3.2 TYDOM 2.0 MAC address	10
3.3 Mount the wall mount.....	11
3.4 SIM card (mini SIM format + voice and text message package).....	12
3.5 Mount TYDOM 2.0	12
3.6 Activation.....	13
3.7 Close TYDOM 2.0	14
4. Associate TYDOM 2.0 with the CS 8000 TYXAL+ alarm control unit	14
5. Personalising TYDOM 2.0	15
5.1 Naming TYDOM 2.0	15
5.2 Activating/deactivating tamper alarm.....	16
5.3 Call numbers.....	16
5.4 Remote monitoring.....	17
5.5 Configuring the SIM card	18
5.6 SMS alert for designated contacts function.....	19
5.7 Auto attendant.....	19
5.8 Maintenance call.....	20
5.9 Privacy	20
5.10 Alarm control unit monitoring	20
6. TYDOM application	21
6.1 Download.....	21
6.2 Configuration.....	21
7. Information and assistance	22
8. Association of home automation functions	23
8.1 Compatible products	23
9. Correct operation test	24
10 Backup mode	25
10.1 Mains power failure.....	25
10.2 Internet connection down.....	25
11. Battery replacement	26
12. Advanced functions	27
13. Technical characteristics	28
14. Troubleshooting	29
Remote monitoring annex (optional feature)	31
Introduction	32
Protocol configuration for Contact ID 10 to 13.....	33
Protocol DC09 configuration	35
Personalising TYDOM 2.0.....	36

1. How does TYDOM 2.0 work?

1.1 Functions

TYDOM 2.0 is connected to a GSM telephone network and to the Internet via an ADSL box. It is associated with the alarm control unit via wireless communication.

It enables:

- remote control of the alarm (using the TYDOM application).
- notifications by a call or text message to another telephone, or a remote monitoring centre (protocol: Contact ID, subscription required).
- The **Video function** (with a DMBV TYXAL+ video detector) makes it possible to:
 - Receive notifications in the event of intrusion via SMS with a video link stored on a protected server.
 - Make a remote display request from home with the TYDOM application (TYDOM 2.0 has to be connected to the Internet, and a DATA package on smartphone or WIFI access are required).
- Receive a SMS when the system is activated/ deactivated (configurable)
- Perform an audio confirmation with intercom function
- Remotely control your heating and control systems, if your installation includes X3D products.
- Create scenarios.
- View the installation's ambient temperature.

In the event of an alert, the outgoing call via the GSM network (even if there is a power outage) is used to:

- Describe the alarm
- Listen in on what is happening on the premises monitored and to speak simultaneously
- Stop the call cycle
- Deactivate the sirens



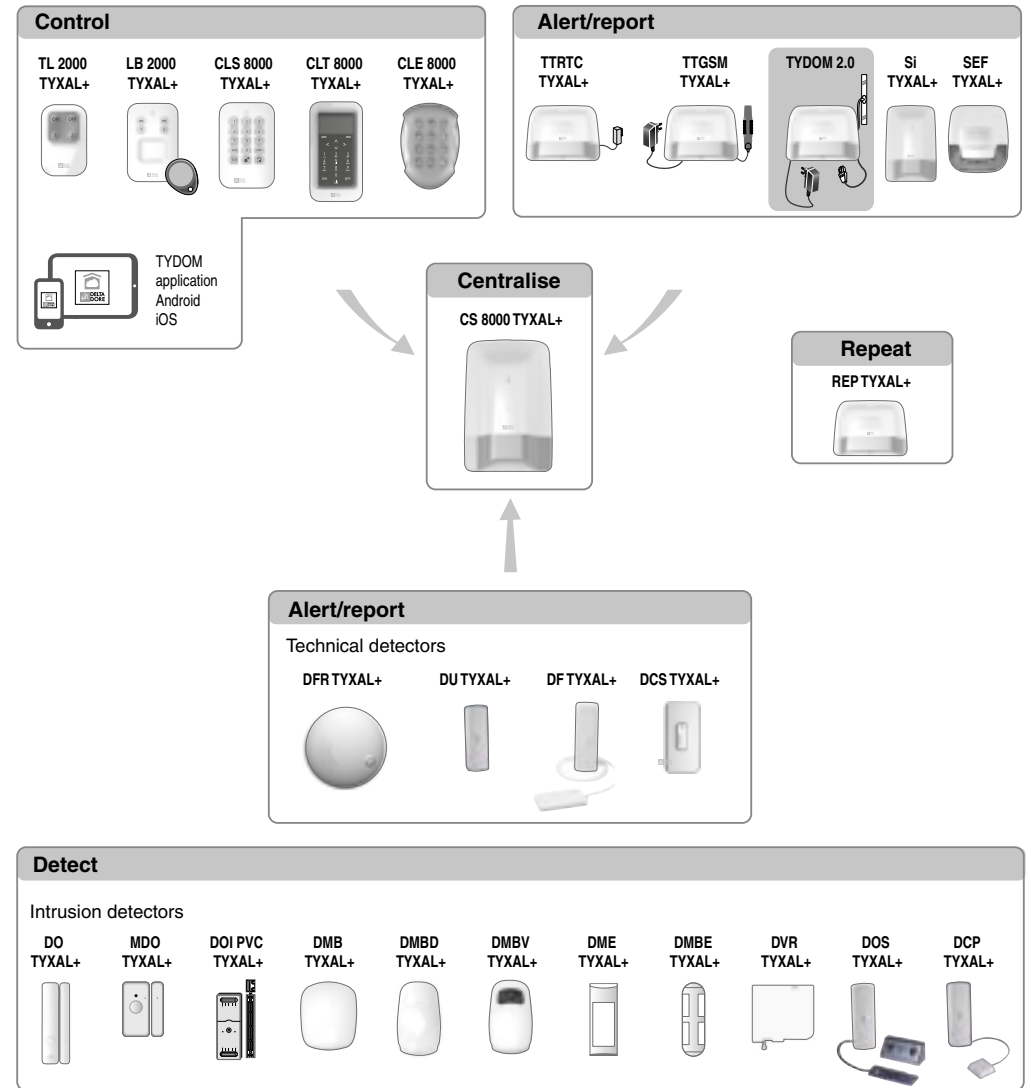
TYDOM application
IOS and Android
(for smartphones and tablets):



- Control (locally or remotely on-line) all your equipment: heating, lighting, roller shutters, control systems and scenarios
- Display consumption details (electricity, gas, water, etc.), with a product from the RT2012 range in Kwh or euros
- Report status of control settings (temperature in home, lighting, etc.)
- Personalisation with icon library and indoor photos
- Manage up to 10 sites (apartments, second homes, shops, etc.)

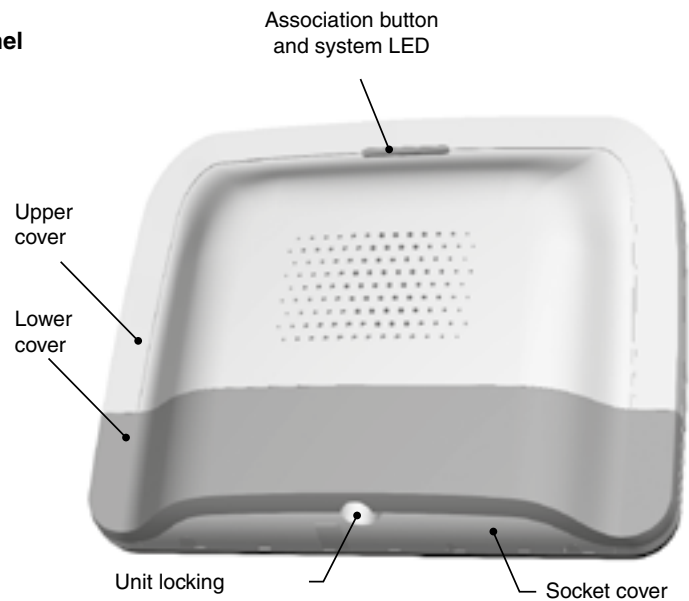
1.2 Operation

TYDOM 2.0 and other products in the TYXAL+ range, intrusion detectors, technical detectors, sirens, key-pads or remote controls will be associated with the CS 8000 TYXAL+ alarm control unit (50 products max.).

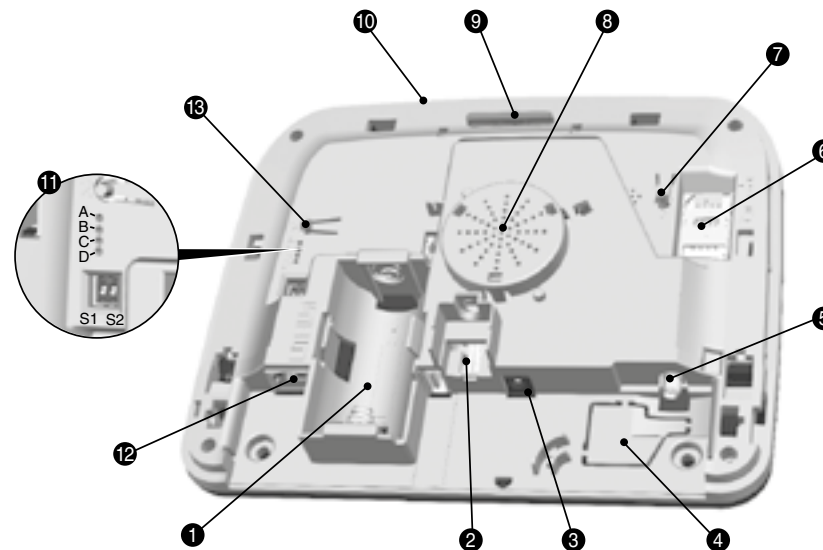
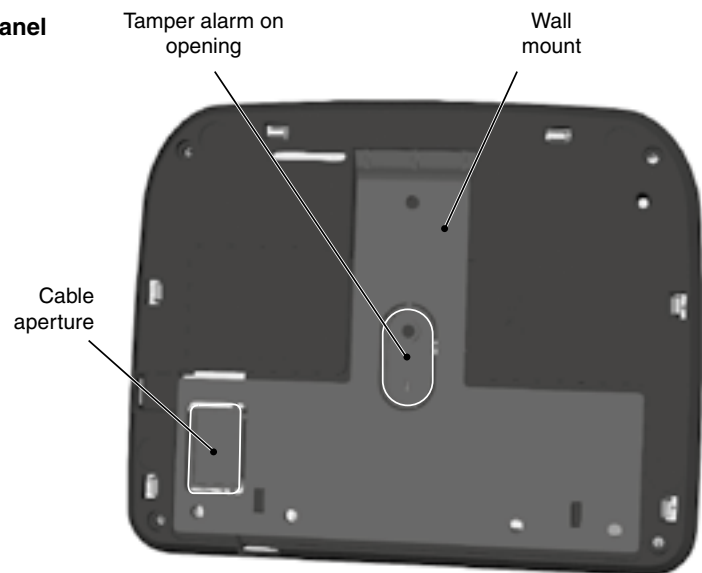


2. Description

Front panel



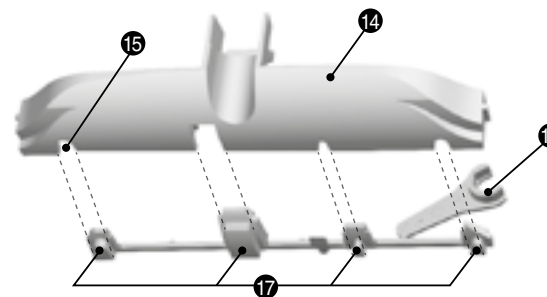
Rear panel



- 1- Battery compartment
- 2 - Tamper alarm on opening
- 3- Mains adapter connection
- 4- Cable aperture
- 5- GSM antenna socket

- 6- SIM card slot
- 7- T3 RESET button
- 8- Loudspeaker
- 9- T1 button association and system LED

- 10- Microphone
- 11- System diagnostic LEDs
- 12- Ethernet port
- 13- T2 button (Not applicable)



- 14- Socket cover
- 15- Cable aperture
- 16- GSM antenna clamping tool
- 17- Break-away plugs

3. Installation

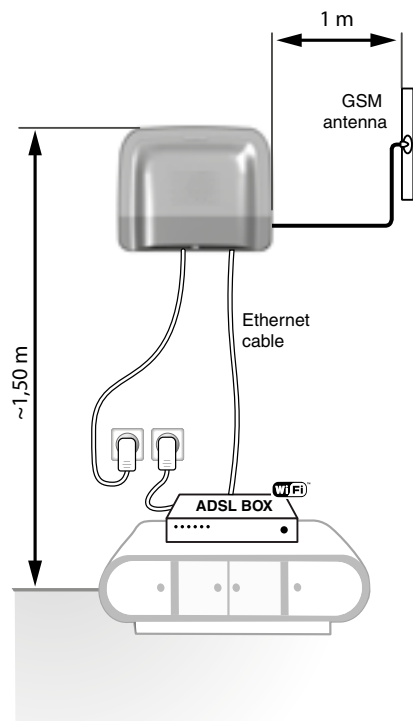
3.1 Location

TYDOM 2.0 must be installed:

- Somewhere it can listen in on the premises effectively (clear and at a height of approximately 1.5 m),
- On a flat surface, with enough space above it to allow room for a screwdriver,
- Somewhere with perfect signal quality for the GSM antenna. (The GSM signal level is displayed on the touch screen and on the system LED).
- More than 1m away from the ADSL box.
- Close to a power outlet

The antenna must be connected to TYDOM 2.0 and installed:

- indoors only,
- more than 2 m from any other wireless product,
- more than 1 m from any metallic item,



3.2 TYDOM 2.0 MAC address

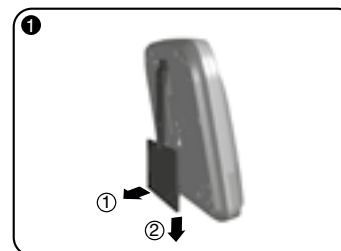
Before mounting TYDOM 2.0, note down the last 6 characters of the MAC address of your TYDOM 2.0. before configuring the TYDOM application.

--	--	--	--	--	--

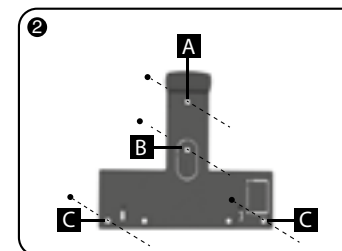


3.3 Mount the wall mount

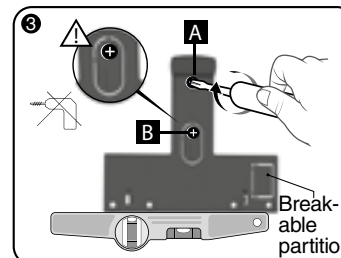
⚠ Check that an electrical outlet and the ADSL box are nearby.



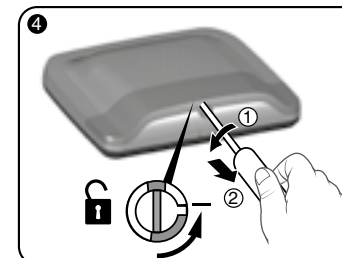
Separate the wall mount from TYDOM 2.0.



Mark the 4 holes A B C C.



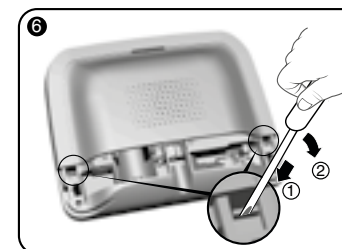
Fix the wall mount with the 2 Ø 4 mm max. screws by using holes A and B. **Do not use an electric screwdriver to screw in the B screw**



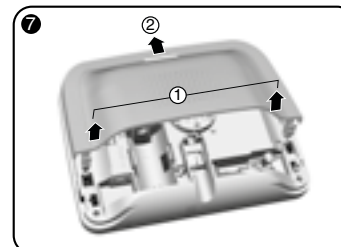
Unlock the unit.



Remove the bottom cover.



Using a screwdriver, lift the 2 clips of the top cover.



Remove the top cover.



Remove the socket cover.

3. Installation

3.4 SIM card (mini SIM format + voice and text message package)

TYDOM 2.0 is connected to a GSM telephone network.

If a problem is detected, a text message is sent to the numbers in the contact list.

GSM network

GSM communications require a subscription to be taken out with an operator.

Advice before taking out your subscription:

- Enquire about your operator's network coverage for your installation.
- To prevent any interruption in the GSM network due to the expiry of a pay-as-you go or limited package SIM card, we do not recommend this type of card.

Your installation has a touch screen keypad (CLT 8000 TYXAL+)

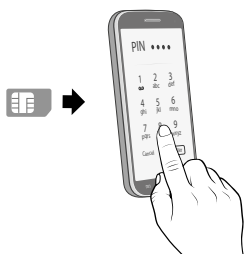
We recommend that you configure your SIM card from the touch screen keypad.

To do this, follow the TYDOM 2.0 activation steps then access the configuration menu of the SIM card (see § 5.6 'Configuring the SIM card' of this guide).



Your installation does not have a touch screen keypad (CLT 8000 TYXAL+)

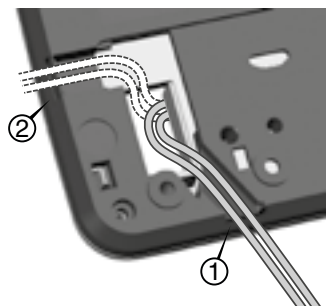
In this case, disable the PIN code of your SIM card using a mobile phone, before installing it into TYDOM 2.0.



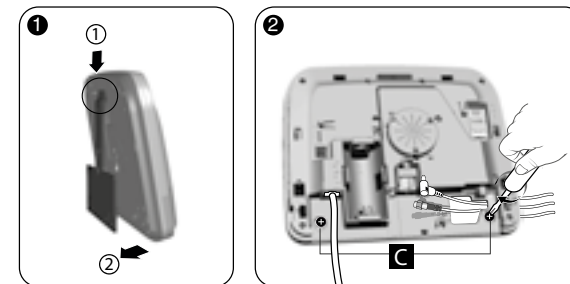
3.5 Mount TYDOM 2.0

Select one of the 2 cable outlets marked

① and ② on the rear panel.



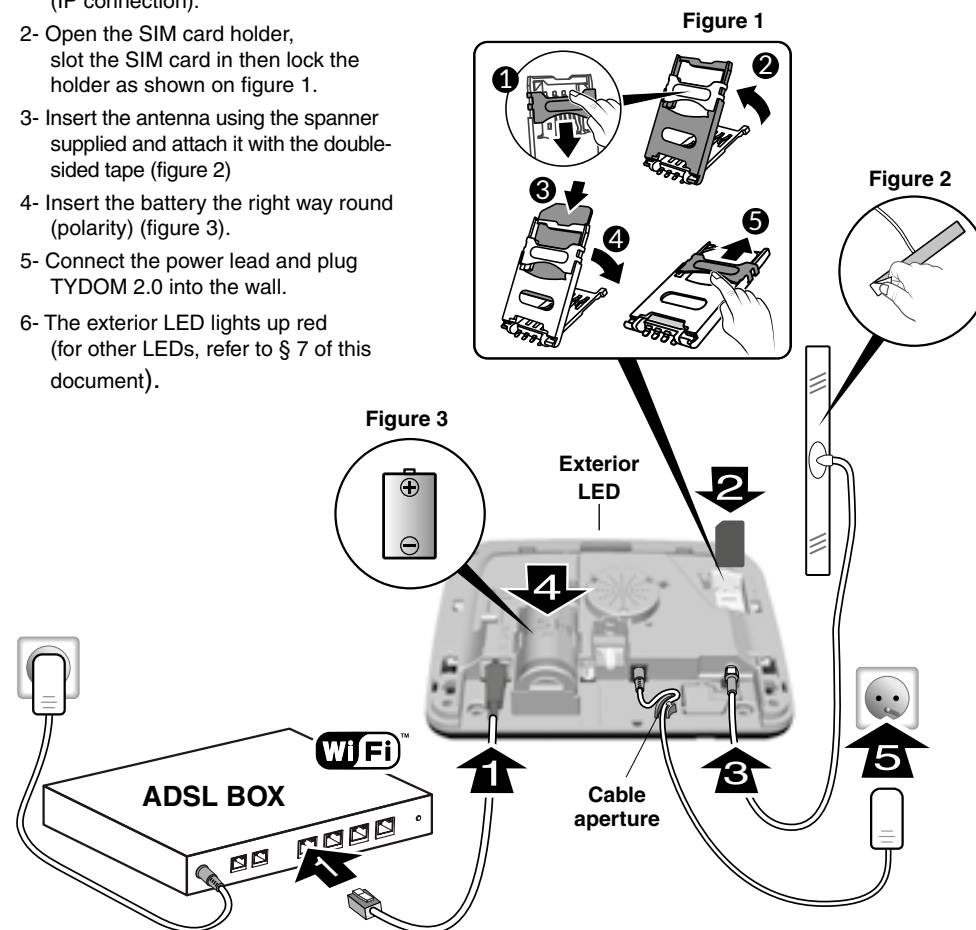
- 1- Place TYDOM 2.0 on the wall mount.
- 2- Attach the unit with the 2 screws Ø 4 mm max. using holes C.



3.6 Activation

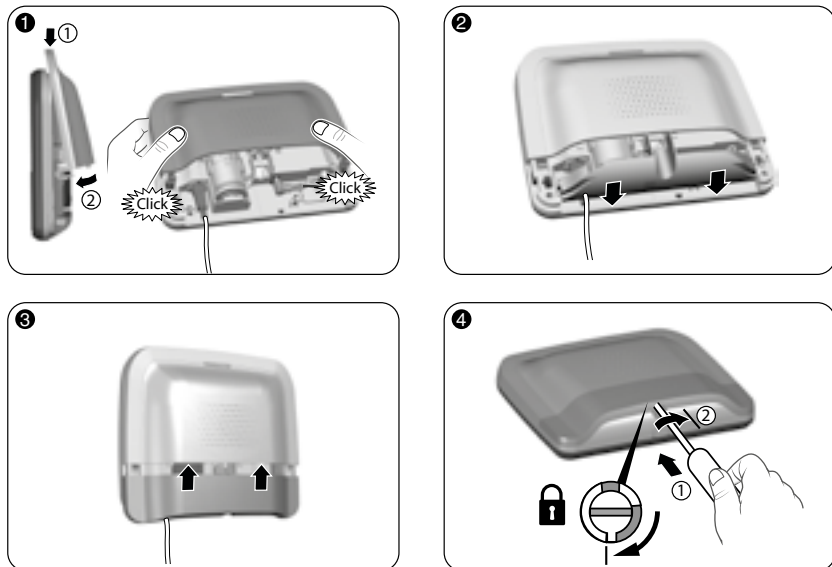
Strictly follow the order of the steps described below.

- 1- Connect TYDOM 2.0 to the ADSL box using the Ethernet cable supplied (IP connection).
- 2- Open the SIM card holder, slot the SIM card in then lock the holder as shown on figure 1.
- 3- Insert the antenna using the spanner supplied and attach it with the double-sided tape (figure 2)
- 4- Insert the battery the right way round (polarity) (figure 3).
- 5- Connect the power lead and plug TYDOM 2.0 into the wall.
- 6- The exterior LED lights up red (for other LEDs, refer to § 7 of this document).



3. Installation

3.7 Close TYDOM 2.0



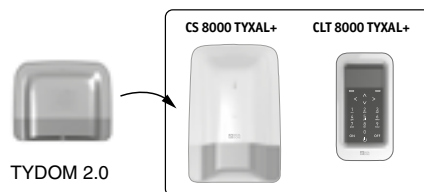
- 1- Refit the upper cover and clip it onto the unit.
- 2- Put the socket cover back on
- 3- Refit the bottom cover.
- 4- Lock the unit.

4. Associate TYDOM 2.0 with the CS 8000 TYXAL+ alarm control unit



Switch the alarm control unit to maintenance mode (see guide for CS 8000 TYXAL+ alarm control unit § Maintenance mode)

- Before switching the alarm control unit to maintenance mode, monitoring must be deactivated (OFF).
- The alarm control unit can only be switched to maintenance mode from a product already associated.
- The CS 8000 TYXAL+ alarm control unit must be associated with a CLT 8000 TYXAL+ touch screen keypad.

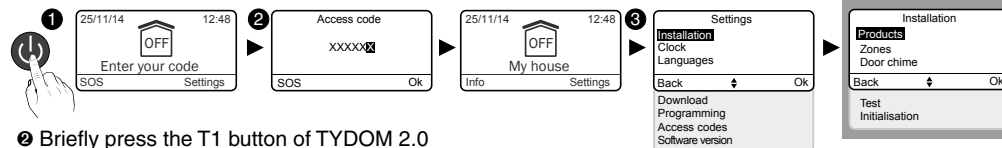


The switch to maintenance mode automatically and briefly activates the indoor siren of the alarm control unit as well as a TYDOM 2.0 call cycle (configurable with CLT 8000 TYXAL+).

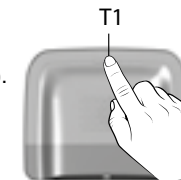
4. Associate TYDOM 2.0 to the CS 8000 TYXAL+ alarm control unit

On the CLT 8000 TYXAL+ touch screen keypad:

- 1 Enter the installer code, press **Settings**, then select the menu: **Installation > Products > Add**



- 2 Briefly press the T1 button of TYDOM 2.0. *TYDOM 2.0 beeps when the T1 button is pressed, then beeps again to confirm the association.*
- 3 The alarm control unit confirms the association with a beep. The associated product is displayed on the CLT 8000 screen (TY2 x xx xx).
- 4 You can now configure and personalise TYDOM 2.0 from the CLT 8000 TYXAL+ touch screen keypad.



5. Personalising TYDOM 2.0

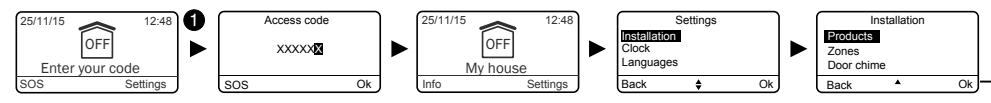


Use the touch screen interface to configure your TYDOM 2.0 even more easily.

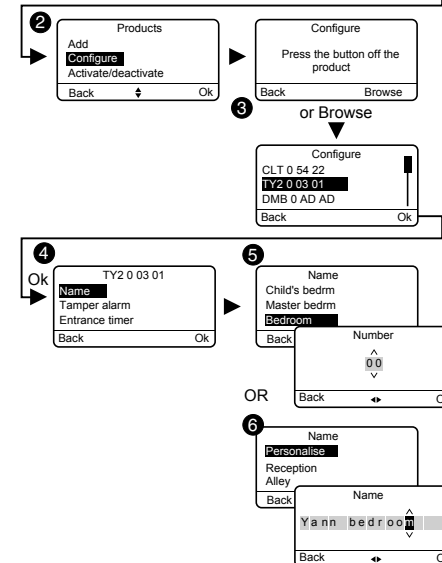
5.1 Naming TYDOM 2.0

This menu is used to select a specific name for your TYDOM 2.0.

- 1 Enter the installer code (123456, by default) and confirm with OK.
- 2 Press **Settings**, then select the menu: **Installation > Products > Configure**



- 3 Press the button of the product or select it from the list of products by clicking on **'Browse'**.
- 4 Once the product is identified, select the **'Name'** menu.
- 5 You can choose a name from the list (recommended), then a number (optional) **or** personalise (6) the product name by entering a new name.
- 6 Confirm with OK.



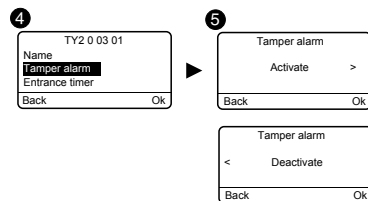
We recommend you use one of the names in the list. In this way, the pre-recorded name will be announced in the event of an alert.



5.2 Activating/deactivating tamper alarm

This menu is used to activate or deactivate the tamper alarm of the products installed.

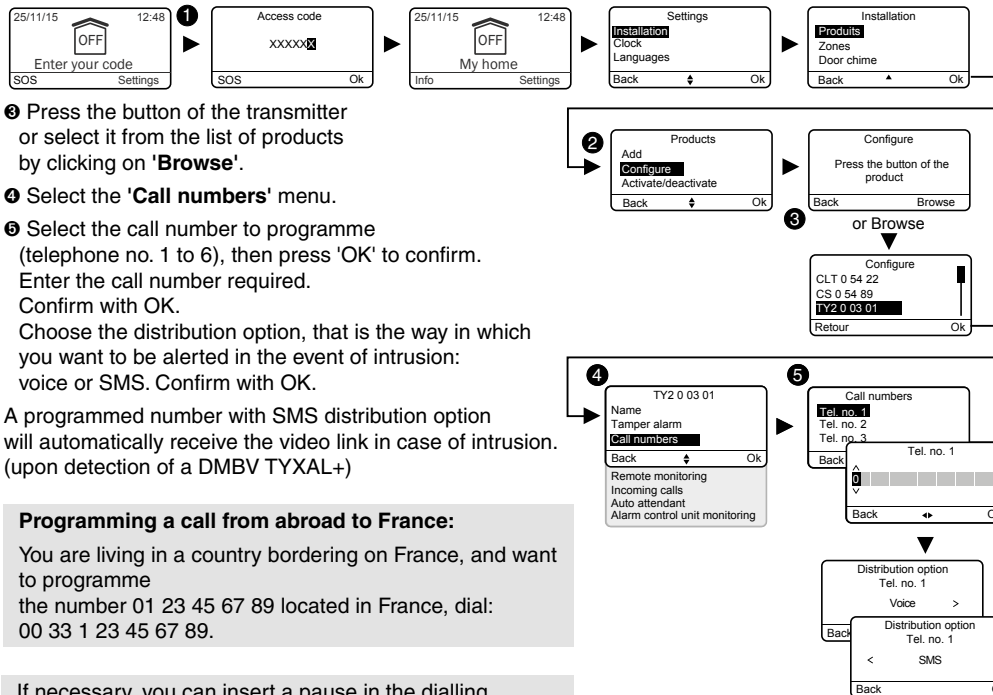
- Enter the installer code (123456, by default) and confirm with OK.
- Press **Settings**, then select the menu: **Installation > Products > Configure**
- Press the button of the product to change or select it from the list of products by clicking on **'Browse'**.
- Once the product is identified, select the **'Tamper alarm'** menu.
- Select **'Activate'** or **'Deactivate'**.
- Confirm with OK.



5.3 Call numbers

This menu is used to programme the numbers that will be called if there is an alarm, technical defect or to send video links.

- Enter the installer code (123456, by default) and confirm with OK.
- Press **Settings**, then select the menu: **Installation > Products > Configure**
- Press the button of the transmitter or select it from the list of products by clicking on **'Browse'**.
- Select the **'Call numbers'** menu.



A programmed number with SMS distribution option will automatically receive the video link in case of intrusion. (upon detection of a DMBV TYXAL+)

Programming a call from abroad to France:
You are living in a country bordering on France, and want to programme the number 01 23 45 67 89 located in France, dial: 00 33 1 23 45 67 89.

If necessary, you can insert a pause in the dialling (maximum 16 digits) by entering #.

5.4 Remote monitoring

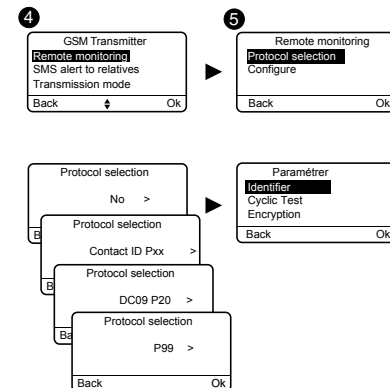
This menu is used to configure the settings for the remote monitoring. A detailed description of the remote monitoring settings is available in § Remote monitoring appendix

- Enter the installer code (123456, by default) and confirm with OK.
- Press **Settings**, then select the menu: **Installation > Products > Configure**
- Press the button of TYDOM 2.0 or select it from the list of products by clicking on **'Browse'**.
- Select the **'Remote monitoring'** menu.

5 Protocol selection

You can choose from the following:

- None
- ID contact P10 to P13 (GSM protocol),
- DC09 P20 (IP Protocol),
- P99 (Advanced protocol, dedicated to a specific use),



Depending on the selected protocol, you must set the following parameters:

	Protocols	
	• Contact ID P10 to P13	• DC09 P20
Parameters	- Identifier - Cyclic test - Main number - Backup number	- Identifier - Cyclic test - Encryption - IP addresses in Ethernet

6 Parameter settings

Enter the parameters provided by the remote monitoring operator.

Main number

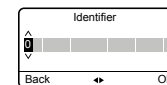
Specify the main number supplied by the remote monitoring operator.

Emergency number

Specify the backup number supplied by the remote monitoring operator.

Identifier

Specify the identifier supplied by the remote monitoring operator.
Contact ID P10 to P13: 5 numeric characters
DC09 P20: 16 alphanumeric characters
CESA 200 Bauds: 4 or 5 numeric characters





Cyclic test

The cyclic test is run at regular intervals.

These intervals are programmed:

Contact ID P10 to P13

- or in number of 1/2 hours between 2 tests (by default 048, i.e. 1 test every 24 hours)

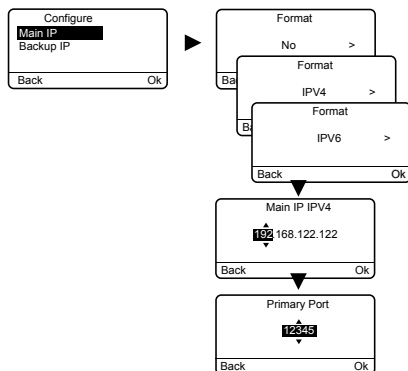
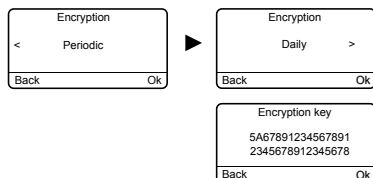
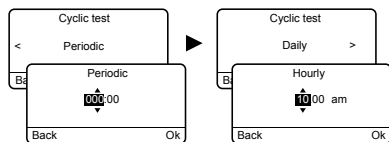
- or at a fixed time, one test per day (time to be programmed on the touchpad or expressed in number of minutes after midnight in voice mode by the telephone transmitter).

DC09 P20

- either by interval (periodic), in 10-minute increments (from 10 min. to 720 hours),

- or at a fixed time (Daily: 1 test/24h).

Press OK to confirm.



Encryption

With this menu, encryption can be enabled or disabled at the request of the remote monitoring operator.

Enter the 32 characters of the encryption key (AES 128 format).

IP addresses (Ethernet)

Enter the IP addresses provided by the remote monitoring operator:

- Main IP, backup IP as well as the port number.

5.5 Configuring the SIM card

This menu is used to enter the PIN code of the SIM card to activate it.

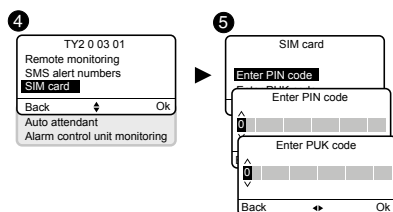
1 Enter the installer code (123456, by default) and confirm with OK.

2 Press **Settings**, then select the menu: **Installation > Products > Configure**

3 Press the button of TYDOM 2.0 or select it from the list of products by clicking on **'Browse'**.

4 Select the **'SIM card'** menu.

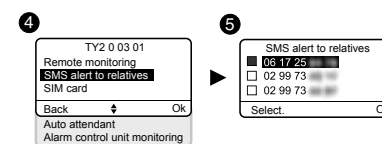
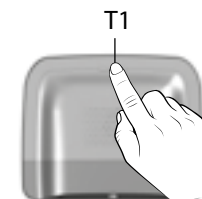
5 Enter the parameters of the SIM card:
PIN code
PUK code (if the SIM card is blocked)



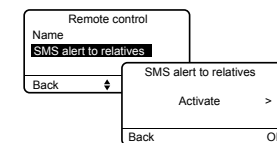
5.6 SMS alert for designated contacts function

This menu is used to send an SMS to a programmed number if the system is activated or deactivated. Example: your child comes home and deactivates the system via the remote control or badge reader, the telephone TYDOM 2.0 sends you an SMS.

- 1 Enter the installer code (123456, by default) and confirm with OK.
- 2 Press **Settings**, then select the menu: **Installation > Products > Configure**
- 3 Press the T1 button (external button) of TYDOM 2.0 or select it from the list of products by clicking on **'Browse'**.
- 4 Select the **'SMS alert to relatives'** menu.
- 5 From the list, select the number or numbers concerned by the SMS warning by pressing Select.
- 6 Confirm with OK.



Check that the 'SMS alert to relatives' option is activated in the 'Settings' menu of the remote control or badge associated with the function.



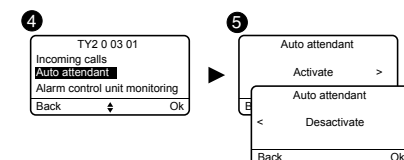
- Voice/SMS distribution option

Refer to the Call numbers section

5.7 Auto attendant

The auto attendant enables you to obtain voice information on the status of your installation when you are near your TYDOM 2.0 (e.g. "your alarm system is on"). You can activate or deactivate it.

- 1 Enter the installer code (123456, by default) and confirm with OK.
- 2 Press **Settings**, then select the menu: **Installation > Products > Configure**
- 3 Press the button of TYDOM 2.0 or select it from the list of products by clicking on **'Browse'**.
- 4 Select the **'Auto attendant'** menu, then 'Activate' or 'Deactivate' (⓪).

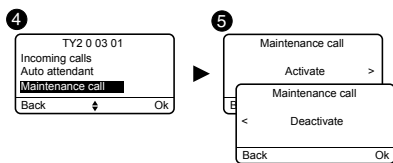




5.8 Maintenance call

A call cycle is triggered each time the system is switched to maintenance mode. This menu allows you to deactivate this maintenance call cycle, for example during activation, to prevent repeated calls. It is important to reactivate the Maintenance call after the activation.

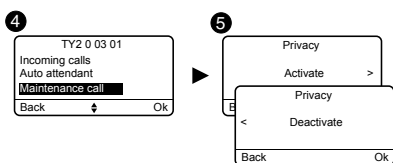
- 1 Enter the installer code (123456, by default) and confirm with OK.
- 2 Press **Settings**, then select the menu: **Installation > Products > Configure**
- 3 Press the button of TYDOM 2.0 or select it from the list of products by clicking on '**Browse**'.
- 4 Select the '**Maintenance call**' menu, then 'Activate' or 'Deactivate' (Ⓜ).



5.9 Privacy

From this menu, you can deactivate any remote viewing request

- 1 Enter the installer code (123456, by default) and confirm with OK.
- 2 Press **Settings**, then select the menu: **Installation > Products > Configure**
- 3 Press the button of TYDOM 2.0 or select it from the list of products by clicking on '**Browse**'.
- 4 Select the '**Privacy**' menu, then 'Activate' or 'Deactivate' (Ⓜ).



5.10 Alarm control unit monitoring

Monitoring is used to trigger a call if TYDOM 2.0 does not receive information from the alarm control unit for more than 4 hours. This function, activated by default is configurable by calling the installation.

To disable this function:

- Call TYDOM 2.0 and enter your code.
- From the main menu, type **#81** then type **0**.

To enable this function:

- From the main menu, type **#81** then type **1**.

6.1 Download

Download the TYDOM application

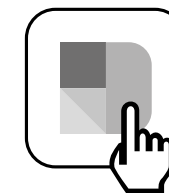
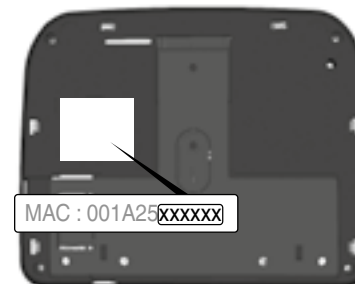
1. Depending on your device: Connect to Google play or App Store
2. Find and download the free 'TYDOM' application
3. Activate the WIFI connection on your smartphone or tablet, and connect to the same local network as your TYDOM 2.0.



6.2 Configuration

Configuring the TYDOM application

- 1 You will need the last 6 characters of the MAC address of your TYDOM 2.0. (see § 3.2)
- 2 Open the TYDOM application and follow the instructions.



7. Information and assistance

7.1 Meaning of LEDs (maintenance mode)

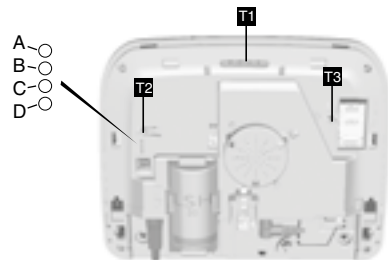
T1 - System status

A - SIM card LED

B - GSM status LED

C - Internet connection

D - IP configuration LED



LED T1	System status
Green on and steady	System accessible locally and remotely Good GSM signal and IP connection OK
Flashing green	GSM call in progress or IP connection in progress
Flashing green/orange	Weak GSM signal and IP connection OK
Red fixed	No IP address assigned or no GSM reception or remote access,
Flashing red	Local IP connection in progress: no GSM reception or remote access.

SIM card

LED A	System status
Off	SIM card OK
On	SIM card missing
Flashing	PIN or PUK code error

GSM

LED B	System status
Off	GSM connection OK
On	GSM not connected
Flashing	Weak GSM signal

Internet connection

LED C	System status
Off	System accessible locally and remotely
On	Cable not connected
Flashing	System accessible locally

IP configuration

LED D	System status
Off	Fixed IP
On	DHCP OK
Flashing	DHCP in progress

8. Association of home automation functions

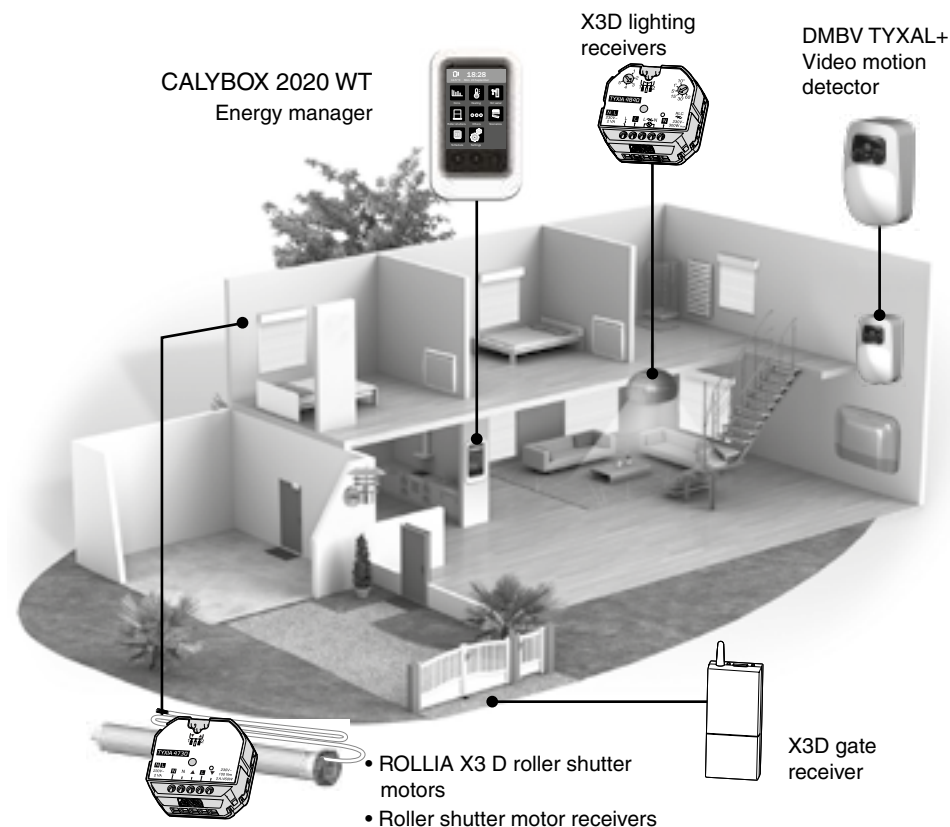
The home automation functions remotely enable you to:

- Adjust house temperature (with 32 heat sensors divided over 8 areas)
- Centralised lighting control, creating lighting moods (32 sensors)
- Control position of roller shutters and blackout blinds (32 channels)
- Control and view the status of your Tyxal+ alarm
- Control numerous control systems (gate, garage door, motors, sprinklers...) (32 channels)
- Create up to 16 scenarios to simplify daily activities (e.g. Leaving the house: all lights turn off, shutters close and alarm is activated)

- Detailed daily consumption display (heating, hot and cold water, gas, electricity) and history log per day/week/month/year
- Reports for main control settings (house temperature, alarm active, etc.)
- Multi-site management: up to 10 home automation gateways managed remotely

These functions can be performed if the equipment allows (X3D receivers).
You can check it with our customer services.

8.1 Compatible products



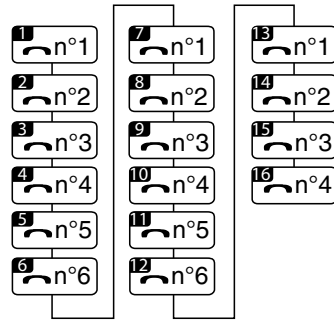
9. Correct operation test

Create a detection event to check that the installation is operational.

Switch on the system, and trigger an intrusion. Allow the call cycle to run without touching the OFF button of a control device.

Check that TYDOM 2.0 calls the programmed numbers (6 at most) one after the other until a contact picks up:

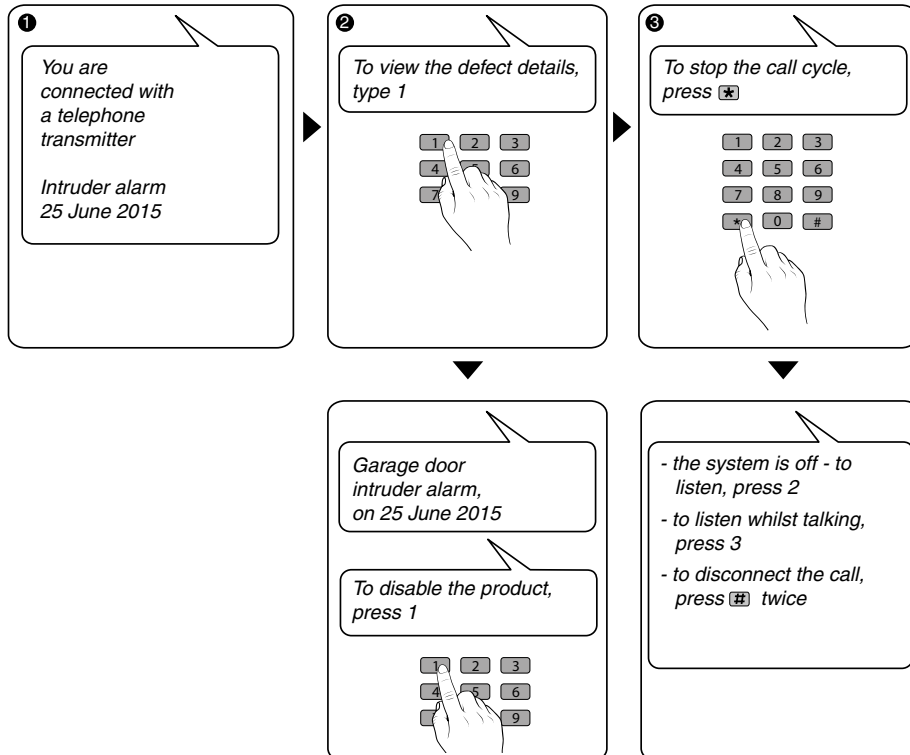
- It reads the voice message and specifies the type of defect,
- It asks if you want to listen to what is happening, speak to a person close to TYDOM 2.0, stop the call cycle and obtain the details of the defects if an alarm control unit is associated.



Example of a full cycle with 6 programmed numbers

From TYDOM 2.0:

You can also trigger a test call cycle by pressing the TYDOM 2.0's button for 30 seconds.



10 Backup mode

10.1 Mains power failure

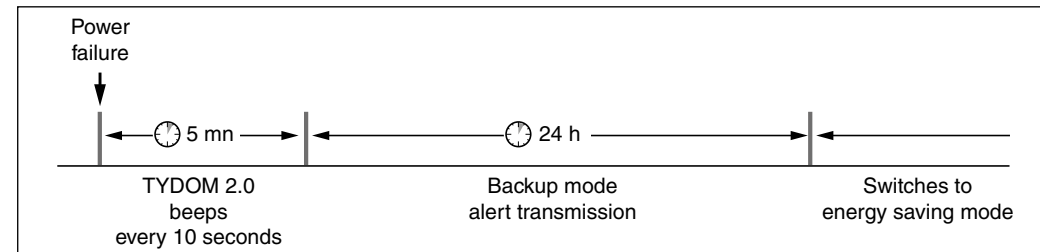
After 5 minutes of power failure, TYDOM 2.0 sends a notification to the alarm control unit. The alarm control unit beeps.

TYDOM 2.0 sends you a notification of the power defect and continues sending alarms via the GSM connection for 24 hours. It is no longer controllable remotely.

After the 24 hour period, TYDOM 2.0 switches to energy saving mode, no other function is available.

As soon as the mains power supply is restored, an end of defect notification is sent to the alarm control unit.

The battery is designed to backup 22 power failures for 10 years.



During a power failure, the video transfer function is not available.

The transfer of video links will resume when the power and Internet access are restored.

10.2 Internet connection down.

After 5 minutes without Internet access, TYDOM 2.0 sends a notification to the alarm control unit.

TYDOM 2.0 continues to send the alerts via the GSM connection, but cannot be controlled by the application. The transfer of video links will resume when the mains power is restored.

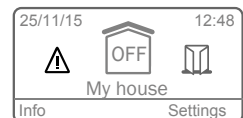
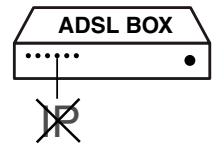
You can activate or deactivate the alarm by using the menus proposed by the speech synthesis system of TYDOM 2.0.

- Dial the installation's call number and let TYDOM 2.0 speech synthesis guide you.

As soon as the Internet connection is restored, an end of defect notification is sent to the alarm control unit.

Defects or end of defect detections are stored and can be viewed with the CLT 8000 TYXAL+ touch screen keypad:
Menu - Info - History logs.

TYDOM 2.0 permanently checks the telephone line and IP connection. In the event of a defect, this symbol comes up on the touch screen keypad. Enter your access code to discover the details of the defects.



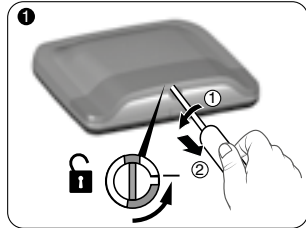
11. Battery replacement

A message is sent to the CLT 8000 TYXAL + keypad to alert that the TYDOM 2.0's battery is empty. The alarm control unit beeps each time the system is activated or deactivated, (or "battery defect" with the speech synthesis system (requires the auto attendant to be enabled, see CLT 8000 TYXAL+ guide).



Switch the alarm control unit to MAINTENANCE mode (see system guide)

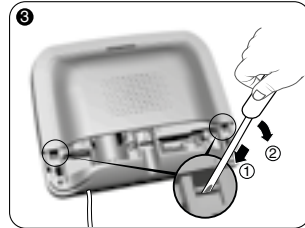
Open the TYDOM 2.0 unit.



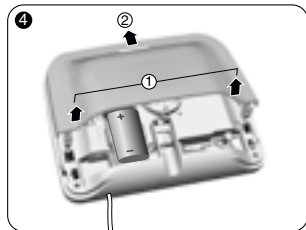
Unlock the unit.



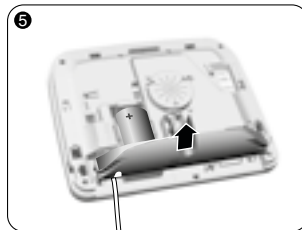
Remove the bottom cover.



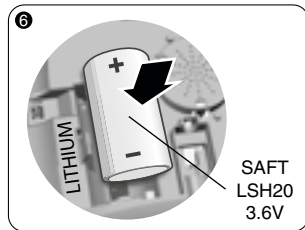
Using a screwdriver, lift the 2 clips holding the top cover.



Remove the top cover.



Remove the socket cover.



Insert the battery, observing the right polarity.

We recommend using SAFT LSH20 - 3.6 V batteries.

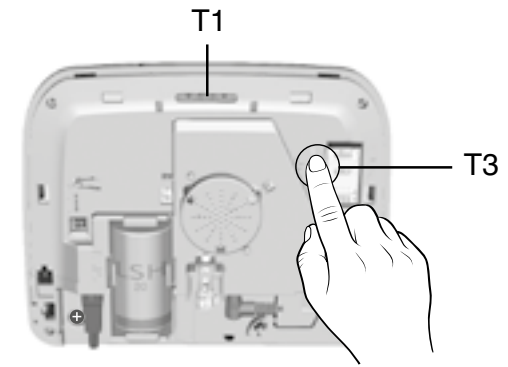


Handling the battery
Risk of fire, explosion and serious burns.

- Keep out of reach of children.
- Do not reverse the polarity.
- Do not open the battery system.
- Do not grind or pierce the parts.
- Do not short circuit the (+) or (-) terminals of the battery by using conductive items.
- Do not subject to excessive mechanical stress.
- Do not expose the unit to water or condensation.
- Do not heat directly to more than 100°C (212°F), solder or throw into a fire. These unsuitable uses can cause leaks or sprays of vaporised electrolyte as well as a fire or explosion.
- Do not recharge.
- Dispose in compliance with the regulations in force.

12. Advanced functions

Switch the alarm control unit to **MAINTENANCE mode** (see system guide).
Open the TYDOM 2.0 unit.



To change from DHCP to a fixed IP

- Press and hold the T3 button for at least 3 seconds until the T1 LED starts flashing slowly.
- Release the button within 15 seconds.

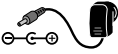











To delete the password of the TYDOM application

- Press and hold the T3 button for at least 15 seconds until the T1 LED starts flashing rapidly.
- Release the button within 30 seconds.

To RESET TYDOM 2.0

- (Use of DHCP, deleting the password, deleting associations, deleting current defects, restoring factory settings)
- Press and hold the T3 button for at least 30 seconds, TYDOM emits a long beep.
 - Release the button

13. Technical characteristics

	Power supply by Mains adaptor Ktec Model : KSAS0120500200VE Electrical characteristics AC : AC : 100 – 240V~, 50/60 Hz, 0.4A - DC : 5V=, 2A Only this adaptor should be used by TYDOM 2.0.
	SAFT LSH20 - 3,6V - 13 Ah - Lithium Battery life 10 years
	
	Stand-by consumption: 8 µA Consumption: 490 mA
	X3D Transmission frequency: 868,7 -> 869,2 MHz / 868 -> 868,60 MHz Maximum radio power <10 mW Receiver category 2 433,05MHz --> 434,79MHz GSM 900-1800 MHz Modem 2G/3G
	DC09 P20 Remote Monitoring Protocol Encryption: AES 128 (in compliance with ANSI/SIA/DC09-2013 standard) TCP transmission mode
	-10°C / +70°C
	+5°C / +40°C
IP	IP 30 - IK 06
	75%
	205 x 165 x 45 mm  700 gr.
	SIM 2G/3G
	Low battery detection: 2.7 V - Battery defect end: 3 V
	Video format: MPEG-4
	Important product information (📄 📖)

Because of changes in standards and equipment, the characteristics given in the text and the illustrations in this document are not binding unless confirmed.

14. Troubleshooting

The intercom quality is poor

Check that you are not using the hands-free mode of your telephone

The voice interface does not allow you to talk

TYDOM 2.0 must be powered by a mains power supply.

Check the 230V power supply of TYDOM 2.0.

Move TYDOM 2.0 as far away from the antenna as possible.

TYDOM 2.0 runs a call cycle when switched to maintenance mode

The switch to maintenance mode automatically and briefly activates the indoor siren of the alarm control unit as well as a (configurable) TYDOM 2.0 call cycle (required by standard EN-50131).

A call cycle in progress is interrupted and replaced by another call cycle

The technical detectors are classed in order of priority:

- 1 - Smoke, fire detector (DFR TYXAL+),
- 2 - Water leak detector (DF TYXAL+),
- 3 - Mains power failure detector (DCS TYXAL+),
- 4 - Universal detector (DU TYXAL+).

Example: A fire alert triggered by a DFR TYXAL+ will take priority over the triggering of a mains failure.

Remote monitoring annex (optional feature)



Introduction

The remote monitoring feature requires a subscription to a company that specialises in providing services to check the integrity of alarm systems.

During the transmission of each alarm, a cycle of digital calls (remote monitor) and/or voice calls (user) is triggered, comprising multiple sequenced attempts.

Depending on the type of product installed, you can use one of three protocols to exchange various data with the remote monitoring centre (e.g. cyclic test, alarm) :

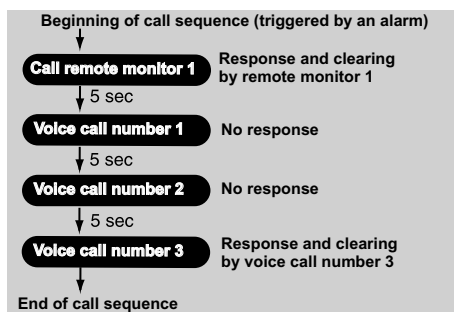
GSM Protocol		IP Protocol
Contact ID 10 -11	Contact ID 12 -13 ⁽¹⁾	DC09 P20 ⁽²⁾

⁽¹⁾ Enhanced protocol. The Contact ID 12-13 protocol is used to transmit the detection path and the detection ends.

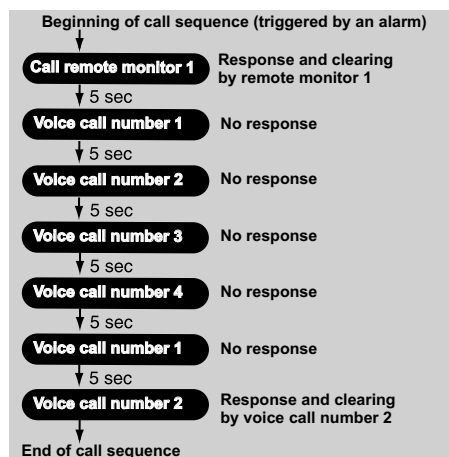
⁽²⁾ The application protocol used for the transmission is the SIA DC05 (Contact ID).

Contact ID P10 to P13

Example 1: Call cycle with a remote monitor number. The 3rd voice number responds and clears:

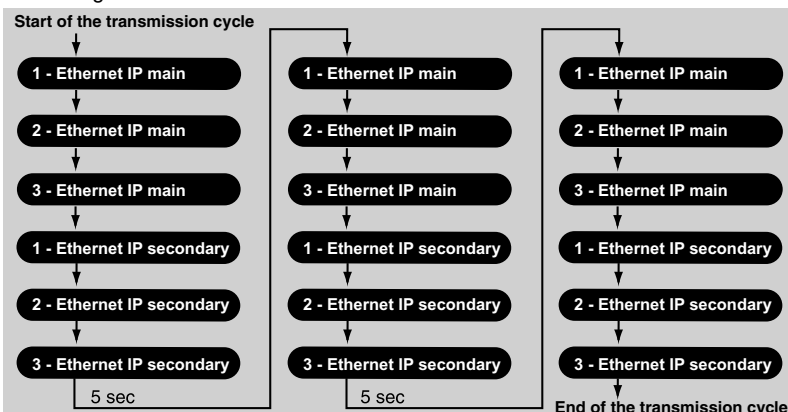


Example 2: Call cycle with a remote monitor number. No voice number responds upon first attempt. The 2nd voice number called responds and clears upon second attempt:



DC09 P20

When an event is to be sent to the alarm receiving centre and only Ethernet is enabled, the Ethernet transmission configuration is as follows:



A voice call cycle can be sent simultaneously from the DC09 transmission configuration.

Protocol configuration for Contact ID 10 to 13

This part of the document concerns the configuration of remote monitoring settings.

If your system has a touch screen keypad, then all the remote monitoring settings shall be configured using the touch screen (see system guide).

If no touch screen keypad is installed, all settings will be configured by calling the TYDOM 2.0 unit from a remote station.

To do this:

- 1) Set the alarm control unit to "Maintenance" mode
- 2) Call the TYDOM 2.0 using a remote line and enter the installer code.
- 3) When the numbered main menu appears, enter "#" followed by the setting number

Setting number	Description
# 91	TYDOM 2.0 identification
# 92	No. for main remote monitor
# 93	No. for backup remote monitor
# 94	Cyclic test frequency
# 95	Protocol selection
# 96	Verification of settings
# 90	Test call cycle

- For this programming mode, data is only authorised for entry and valid after a beep is emitted.
- Any change to parameters that is not confirmed (prompted button not pressed, exit from the function before completion, etc.) is not applied and the old settings remain in force.
- You can disconnect the call at any time by pressing ##.

#91 - TYDOM 2.0 identification

To be recognised by the remote monitoring centre during data exchanges, TYDOM 2.0 requires an identification code.

This is composed of a number supplied by the remote monitor (max. 5 digits)

To enter this number:

- enter "#91", and the TYDOM 2.0 will emit a beep.
- enter the digits for the code and confirm by pressing "*" . The TYDOM 2.0 unit will then repeat the number entered: "remote monitor code xxxxx"

If you simply enter "*" then the identification is deleted.

The verification message displayed in this case is: "No identification".

#92 and #93 - Main and backup remote monitor telephone numbers

Information sent by TYDOM 2.0 to the remote monitor is sent via a main number and, in the case of a problem with the main line, a backup number.

These two numbers are supplied by the remote monitor.

To set the main number:

- enter "#92", and the TYDOM 2.0 will emit a beep
- Enter the main call number and conclude by pressing "*" . The TYDOM 2.0 unit will then repeat the number entered: "Remote monitor main number xxxxxxxxxx"

To set the backup number:

- enter "#93", The TYDOM 2.0 will beep.
- Enter the backup call number and conclude by pressing "*" . The TYDOM 2.0 unit will then repeat the number entered: "Remote monitor backup number xxxxxxxxxx"

Each of these two numbers (main and backup) can include a maximum of 16 digits (example: in the case of adding a 0 to call through a standard number).

A2. Protocol configuration for Contact ID 10 to 13

#94 - Cyclic test frequency

The cyclic test is run at regular intervals.

This test is programmed according to 2 possible choices, determined in option #82 (see §A4.2):

- either in number of 1/2 hour periods between 2 tests (by default 048, or one test every 24 hours)
- or at a fixed time, at the frequency of one test per day (expressed in number of minutes after midnight).

To programme the cyclic test:

- dial "#94"
- enter the 3 digits corresponding to your choice (example 1: "024" for a test every 12 hours by validating option #82=0, example 2: "180" for one cyclic test per day at 3:00 am, by validating option #82=1).

#95 - Protocol selection

95 10: (Contact ID P10) - Contact ID without audio confirmation

95 11: (Contact ID P11) - Contact ID with audio confirmation / Elpro intercom

95 12: (Contact ID P12) - Enhanced Contact ID without audio confirmation

95 13: (Contact ID P10) - Enhanced Contact ID with audio confirmation / Elpro intercom.

To select a protocol:

- enter "#95",
- enter the 2 digits corresponding to your choice (10, 11, 12, or 13).

TYDOM 2.0 repeats the type of protocol selected:

Example "Contact ID P10 Protocol"

Audio confirmation = listening to the premises
Intercom = conversation

#96 - Parameter check

This menu allows you to listen back to the settings previously entered.

To access it:

- enter "#96",
- listen to the options and the values successively stated by the telephone.

#90 - Test call cycle

This option allows a manual test to be sent to check the programming of the TYDOM 2.0.

To do this:

- enter "#90",
- TYDOM 2.0 disconnects the call: "Goodbye".

Tydom 2.0 will send the "Manual Test" code within 20 seconds.

Protocol DC09 configuration

For the configuration of the DC09 protocol, a touchpad must be available (Identifier, Encryption key, IP addresses parameters).

Some controls can be activated remotely via the voice interface.

To do this:

- 1) Set the alarm control unit to "Maintenance" mode
- 2) Call the **TYDOM 2.0** using a remote line and enter the installer code.
- 3) When the numbered main menu appears, enter "#" followed by the setting number

Setting number	Description
# 96	Verification of settings
# 90	Test call cycle

#96 - Parameter check

This menu allows you to listen to the parameters entered via the keypad.

To access it:

- enter "#96",
- listen to the options and the values successively stated by the telephone.

#90 - Test call cycle

This option allows a manual test to be sent to check the programming of the TYDOM 2.0.

To do this:

- enter "#90",
- TYDOM 2.0 disconnects the call: "Goodbye".

Tydom 2.0 will send the "Manual Test" code within 20 seconds.

Personalising TYDOM 2.0

There are commands that allow the way TYDOM 2.0 functions to be personalised.
 From the TYDOM 2.0 main menu (set the alarm control unit to "Maintenance" mode, see guide).
 - enter command #82, then select the option (1 to 7) and its status (active or inactive).
 Example: enter #82 1 1 to activate transmission On / Off.

Alarm control unit monitoring

Monitoring triggers a call if TYDOM 2.0 does not receive information from the alarm control unit for more than 4 hours. This function is enabled by default.

Configuration menu	Activated	Function
	Disabled	
# 81	1	1 = Activated 0 = Deactivated
	0	

NF&A2P certification requires that this option be activated.

Transmission

	Option		
# 82	2	1	Cyclic test ⁽¹⁾ . 1 = the test is performed x minutes after midnight 0 = the test is performed every x 1/2 hour period(s).
		0	
	3	1	Reserved.
		0	
	5	1	Reserved.
		0	
	6	1	1 = method 2 for fast disconnection prohibited (see the TYDOM 2.0 guide).
		0	
	7	1	Reserved
		0	

⁽¹⁾ Not available when the protocol used is DC09 P20
: Default choice.

DELTA DORE IP/GSM transmitter configuration TYDOM 2.0

Contact ID 10 - 11 protocol

Transmitter line number: Date :

Client / Address:

Remote monitor / Tel. No. / person to contact:

Installer / Tel. No. / person to contact:

Transmitter identification number:
 (supplied by the remote monitor)

No. for telephone call:
 (recipients)
 → Main tel. No.
 → Backup tel. No.

Transmission On / Off:
 → enabled
 → disabled by default

Cyclic test frequency:
 → Time of start of first call Hour Min

 → Number of 1/2 hour periods

 between 2 tests (048 by default)

 or No. of minutes after midnight

Codes transmitted	ACCT	MT	Q	XYZ	GG	CCC	Data transmitted
Activation / Deactivation	18	1	401	00	000		Deactivation
	18	3	401	00	000		Activation
	18	1	402	00	000		Activation by zone
	18	1	455	00	000		Automatic activation
Alarm	18	1	101	00	000		Distress alarm
	18	1	110	00	000		Smoke alarm
	18	1	124	00	000		Discreet alarm
	18	1	132	00	000		Intruder alarm
	18	1	137	00	000		Tamper alarm
	18	1	152	00	000		Freezer technical alarm
	18	1	154	00	000		Water technical alarm
	18	1	159	00	000		Frost technical alarm
	18	1	162	00	000		Gas technical alarm
	18	1	301	00	000		Electricity technical alarm
	18	1	302	00	000		Battery defect
	18	1	311	00	000		Battery dead
	18	1	331	00	000		Technical alarm
	18	1	351	00	000		Telephone line fault
18	1	355	00	000		Monitoring fault	
Test	18	1	601	00	000		Manual test
	18	1	602	00	000		Cyclic test
	18	1	606	00	000		Intercom

Elpro commands for Intercom:
 0 : Hang up
 * : Switch to Half Duplex
 # : Switch to Full Duplex

Example :

XXXX 18 3 401 00 000	Full operation
XXXX 18 1 401 00 007	Deactivation of zone 7
XXXX 18 1 132 00 001	Start Intruder alarm zone 1
XXXX 18 1 110 00 000	Start fire alarm whole area



IP/GSM transmitter configuration TYDOM 2.0

Contact ID 12 - 13 protocol

Transmitter line number: Date :
Client / Address:
Remote monitor / Tel. No. / person to contact:.....
Installer / Tel. No. / person to contact:
Transmitter identification number: [][][][]
(supplied by the remote monitor)

No. for telephone call: Main tel. No. Backup tel. No.
Transmission On / Off: enabled [] disabled [] by default
Cyclic test frequency: Time of start of first call [][][][] Hour Min
Number of 1/2 hour periods between 2 tests (048 by default) or No. of minutes after midnight [][][][] Hour Min

Table with columns: Codes transmitted, ACCT, MT, Q, XYZ, GG, CCC, Data transmitted. Includes rows for Activation/Deactivation, Alarm, and Test.

1 = Start of alarm 3 = End of alarm Zone Name (description)

Table with columns: Code, ACCT, MT, Q, XYZ, GG, CCC, Data transmitted. Includes Example rows for monitoring and alarm faults.

Table with columns: CCC, Name. Lists various room codes and names such as Workshop, Bath/shower, Office, etc.

Elpro commands for Intercom:
0 : Hang up
* : Switch to Half Duplex
: Switch to Full Duplex

The end of alarm is only sent for alarm faults: Intrusion, Tamper alarm and Technical alarm (in this case Q = 3).



IP/GSM transmitter configuration TYDOM 2.0

Date :

IP DC09 P20 PROTOCOL

Fixed IP address (transmitter) [][][] . [][][] . [][][] . [][][] or DHCP []
Client / Address:
Remote monitor / Tel. No. / person to contact:
Installer / Tel. No. / person to contact:
Transmitter identification number: []
(supplied by the remote monitor)
Transmission On / Off: Activated [] Deactivated [] (by default)
Cyclic test: Regular (10 minutes to 720h) [][][] : [][][] Hour Min
Daily (once/24h) [][][] : [][][] Timetable
Encryption: Indicate the 32 characters of the encryption key
[]
[] Activated [] Deactivated
Ethernet: Indicate the IP addresses as well as the port number.
Main IP [][][] . [][][] . [][][] . [][][] Main port [][][][]
Backup IP [][][] . [][][] . [][][] . [][][] Backup port [][][][]

Table with columns: Codes transmitted, ACCT, MT, Q, XYZ, GG, CCC, Data transmitted. Includes rows for Activation/Deactivation, Alarm, and Test.

1 = Start of alarm 3 = End of alarm Zone Name (description)

Table with columns: Code, ACCT, MT, Q, XYZ, GG, CCC, Data transmitted. Includes Example rows for monitoring and alarm faults.

The end of alarm is only sent for alarm faults: Intrusion, Tamper alarm and Technical alarm (in this case Q = 3).

IP DC09 P20 protocol - continued

Additional parameters

In accordance with ANSI/SIA DC09 2013, TYDOM 2.0 will also send the following parameters (in the XData field of the protocol):

			Example
Time of Occurrence	“H”	Time of event	17:29:44,03/13/2019
Alarm Text	“I”	Description of event	Intruder alarm
Site Name	“S”	Description of the site	Bath shower
Location	“L”	Zone description	Ground floor
Room	“R”	Product name	Intruder alarm living room 2
Alarm Trigger	“T”	Triggering of alarm	Elements that triggered the alarm



www.deltadore.com